



***Note: Crash truck required at posted speeds above 40mph or greater**

***Note: Daily installation and removal of the work zone. Work Zone to use only space need for daily work. The work zone shall maintain access to all driveways whenever possible**

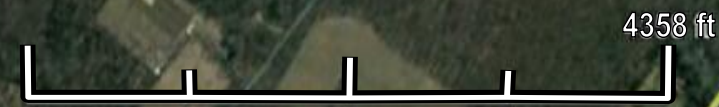
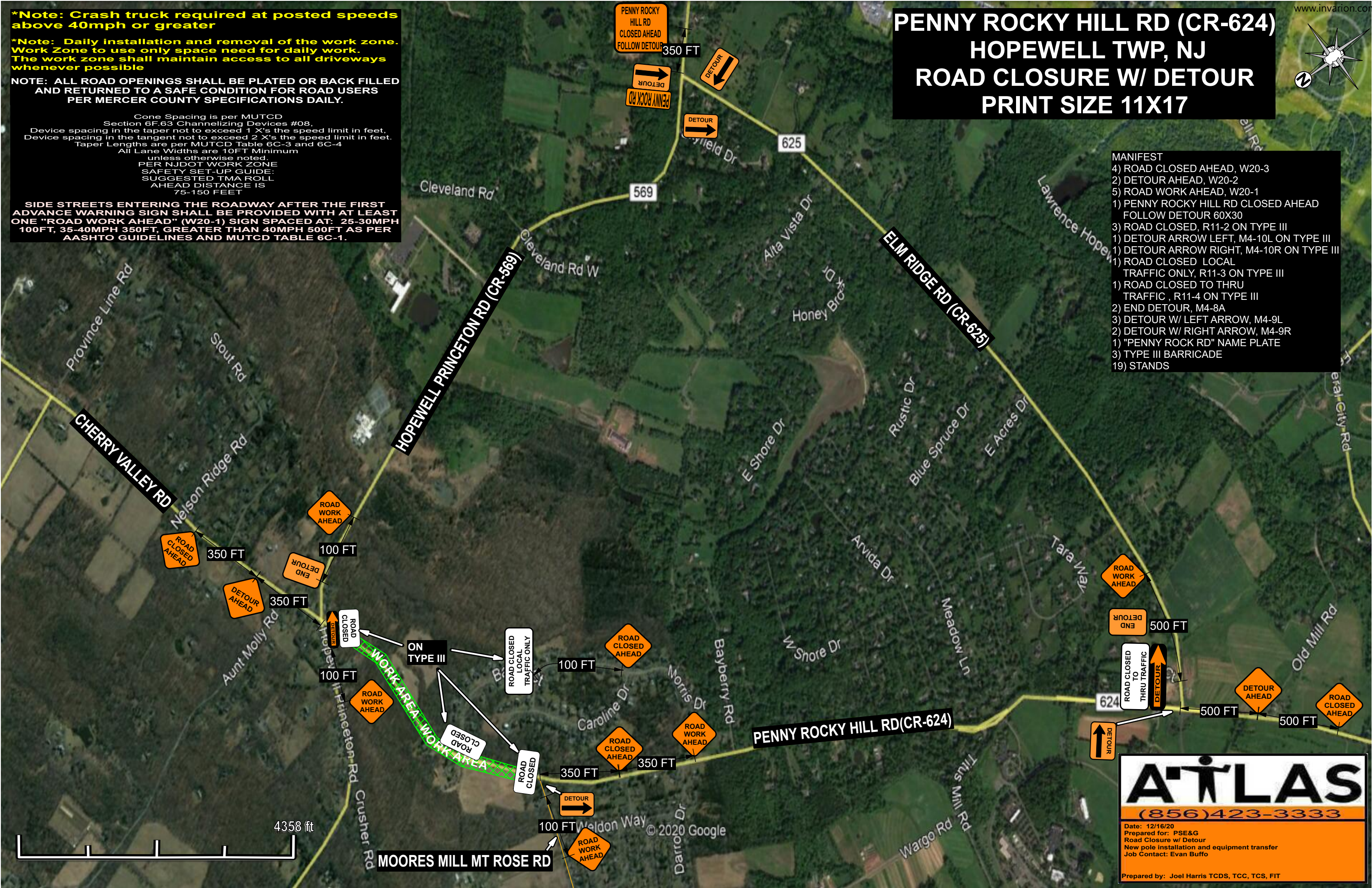
NOTE: ALL ROAD OPENINGS SHALL BE PLATED OR BACK FILLED AND RETURNED TO A SAFE CONDITION FOR ROAD USERS PER MERCER COUNTY SPECIFICATIONS DAILY.

Cone Spacing is per MUTCD Section 6F.63 Channelizing Devices #08, Device spacing in the taper not to exceed 1 X's the speed limit in feet, Device spacing in the tangent not to exceed 2 X's the speed limit in feet. Taper Lengths are per MUTCD Table 6C-3 and 6C-4 All Lane Widths are 10FT Minimum unless otherwise noted. PER NJDOT WORK ZONE SAFETY SET-UP GUIDE: SUGGESTED TMA ROLL AHEAD DISTANCE IS 75-150 FEET

SIDE STREETS ENTERING THE ROADWAY AFTER THE FIRST ADVANCE WARNING SIGN SHALL BE PROVIDED WITH AT LEAST ONE "ROAD WORK AHEAD" (W20-1) SIGN SPACED AT: 25-30MPH 100FT, 35-40MPH 350FT, GREATER THAN 40MPH 500FT AS PER AASHTO GUIDELINES AND MUTCD TABLE 6C-1.

PENNY ROCKY HILL RD (CR-624) HOPEWELL TWP, NJ ROAD CLOSURE W/ DETOUR PRINT SIZE 11X17

- MANIFEST**
- 4) ROAD CLOSED AHEAD, W20-3
 - 2) DETOUR AHEAD, W20-2
 - 5) ROAD WORK AHEAD, W20-1
 - 1) PENNY ROCKY HILL RD CLOSED AHEAD FOLLOW DETOUR 60X30
 - 3) ROAD CLOSED, R11-2 ON TYPE III
 - 1) DETOUR ARROW LEFT, M4-10L ON TYPE III
 - 1) DETOUR ARROW RIGHT, M4-10R ON TYPE III
 - 1) ROAD CLOSED LOCAL TRAFFIC ONLY, R11-3 ON TYPE III
 - 1) ROAD CLOSED TO THRU TRAFFIC, R11-4 ON TYPE III
 - 2) END DETOUR, M4-8A
 - 3) DETOUR W/ LEFT ARROW, M4-9L
 - 2) DETOUR W/ RIGHT ARROW, M4-9R
 - 1) "PENNY ROCK RD" NAME PLATE
 - 3) TYPE III BARRICADE
 - 19) STANDS



A'TLAS
(856)423-3333

Date: 12/16/20
Prepared for: PSE&G
Road Closure w/ Detour
New pole installation and equipment transfer
Job Contact: Evan Buffo

Prepared by: Joel Harris TCDS, TCC, TCS, FIT