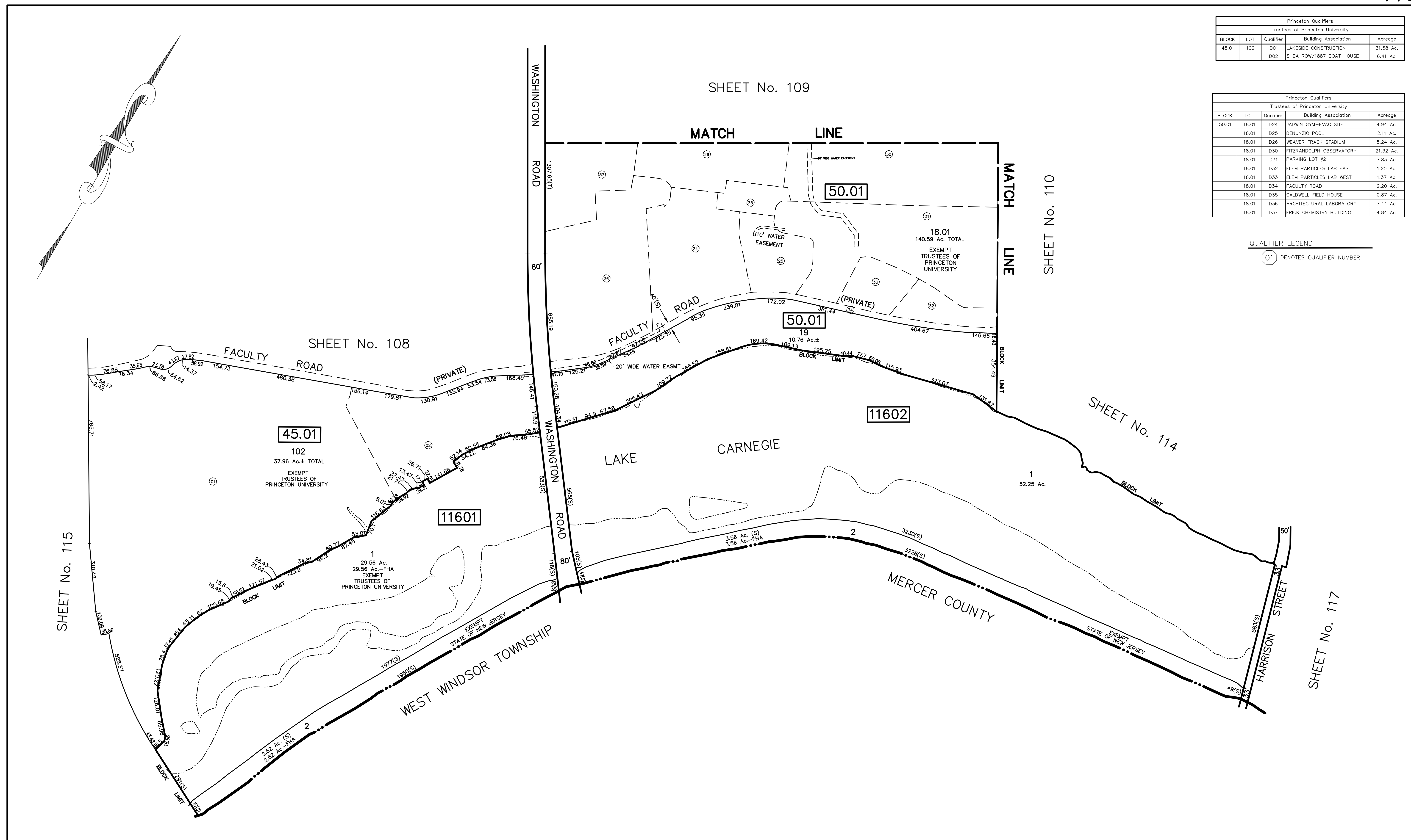


Princeton Qualifiers				
Trustees of Princeton University				
BLOCK	LOT	Qualifier	Building Association	Acreage
45.01	102	D01	LAKE-SIDE CONSTRUCTION	31.58 Ac.
		D02	SHEA ROW/1887 BOAT HOUSE	6.41 Ac.

Princeton Qualifiers				
Trustees of Princeton University				
BLOCK	LOT	Qualifier	Building Association	Acreage
50.01	18.01	D24	JADWIN GYM-EVAC SITE	4.94 Ac.
	18.01	D25	DENUNZIO POOL	2.11 Ac.
	18.01	D26	WEAVER TRACK STADIUM	5.24 Ac.
	18.01	D30	FITZRANDOLPH OBSERVATORY	21.32 Ac.
	18.01	D31	PARKING LOT #21	7.83 Ac.
	18.01	D32	ELEM PARTICLES LAB EAST	1.25 Ac.
	18.01	D33	ELEM PARTICLES LAB WEST	1.37 Ac.
	18.01	D34	FACULTY ROAD	2.20 Ac.
	18.01	D35	CALDWELL FIELD HOUSE	0.87 Ac.
	18.01	D36	ARCHITECTURAL LABORATORY	7.44 Ac.
	18.01	D37	FRICK CHEMISTRY BUILDING	4.84 Ac.

QUALIFIER LEGEND
 (01) DENOTES QUALIFIER NUMBER



REVISIONS		
DATE	L.S. NAME	NO.
10/31/16	GREGORY SANDUSKY	GB36758
10/1/18	GREGORY SANDUSKY	GB36758
10/1/21	GREGORY SANDUSKY	GB36758

This map has been redrawn using Computer Aided Drafting/Design (CAD/D) based on the map prepared by Kenneth R. Raikes, August, 2011.

THIS MAP SHEET HAS BEEN FORMALLY CERTIFIED FOR CONSOLIDATION ON 12/10/2012, ASSIGNED SERIAL NUMBER 1012, AND SIGNED BY SUE DAVIDSON (CTA SUPERVISING FIELD REPRESENTATIVE FOR THE STATE OF NEW JERSEY). A COPY OF THE ORIGINALLY APPROVED MAPS ARE ON FILE AT THE MUNICIPALITY OF PRINCETON LOCATED AT 400 WITHERSPOON STREET, PRINCETON, N.J. THE NEW JERSEY STATE DIVISION OF TAXATION IS RETAINING THE OFFICIAL APPROVED MAPS.

TAX MAP PRINCETON
 MERCER COUNTY, NEW JERSEY
 SCALE: 1"=200' OCTOBER, 2012
 DAVID B. DIXON, PLS
 Professional Land Surveyor N.J. Lic. No.27282
 OMLAND ENGINEERING ASSOCIATES, INC.
 CEDAR KNOLLS, NEW JERSEY
 To Show Conditions as of October, 2012