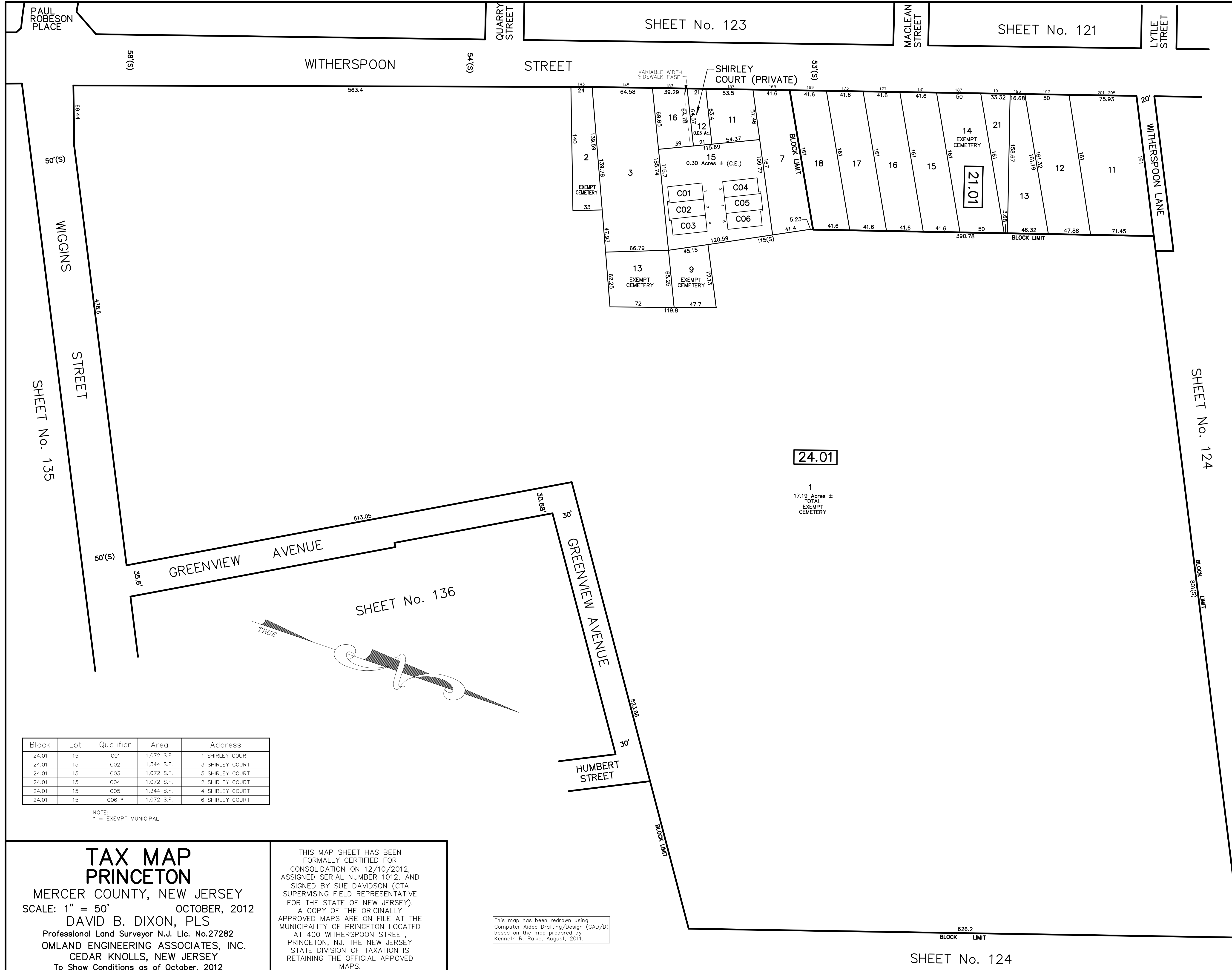


REVISIONS		
DATE	L.S. NAME	NO.
10/31/16	GREGORY SANDUSKY	GB36758
10/1/17	GREGORY SANDUSKY	GB36758
10/1/20	GREGORY SANDUSKY	GB36758



Block	Lot	Qualifier	Area	Address
24.01	15	C01	1,072 S.F.	1 SHIRLEY COURT
24.01	15	C02	1,344 S.F.	3 SHIRLEY COURT
24.01	15	C03	1,072 S.F.	5 SHIRLEY COURT
24.01	15	C04	1,072 S.F.	2 SHIRLEY COURT
24.01	15	C05	1,344 S.F.	4 SHIRLEY COURT
24.01	15	C06 *	1,072 S.F.	6 SHIRLEY COURT

NOTE:  
\* = EXEMPT MUNICIPAL

**TAX MAP**  
**PRINCETON**  
MERCER COUNTY, NEW JERSEY  
SCALE: 1" = 50'      OCTOBER, 2012  
DAVID B. DIXON, PLS  
Professional Land Surveyor N.J. Lic. No.27282  
OMLAND ENGINEERING ASSOCIATES, INC.  
CEDAR KNOLLS, NEW JERSEY  
To Show Conditions as of October, 2012

THIS MAP SHEET HAS BEEN FORMALLY CERTIFIED FOR CONSOLIDATION ON 12/10/2012, ASSIGNED SERIAL NUMBER 1012, AND SIGNED BY SUE DAVIDSON (CTA SUPERVISING FIELD REPRESENTATIVE FOR THE STATE OF NEW JERSEY). A COPY OF THE ORIGINALLY APPROVED MAPS ARE ON FILE AT THE MUNICIPALITY OF PRINCETON LOCATED AT 400 WITHERSPOON STREET, PRINCETON, N.J. THE NEW JERSEY STATE DIVISION OF TAXATION IS RETAINING THE OFFICIAL APPROVED MAPS.

This map has been redrawn using Computer Aided Drafting/Design (CAD/D) based on the map prepared by Kenneth R. Roike, August, 2011.

626.2  
BLOCK LIMIT  
SHEET No. 124