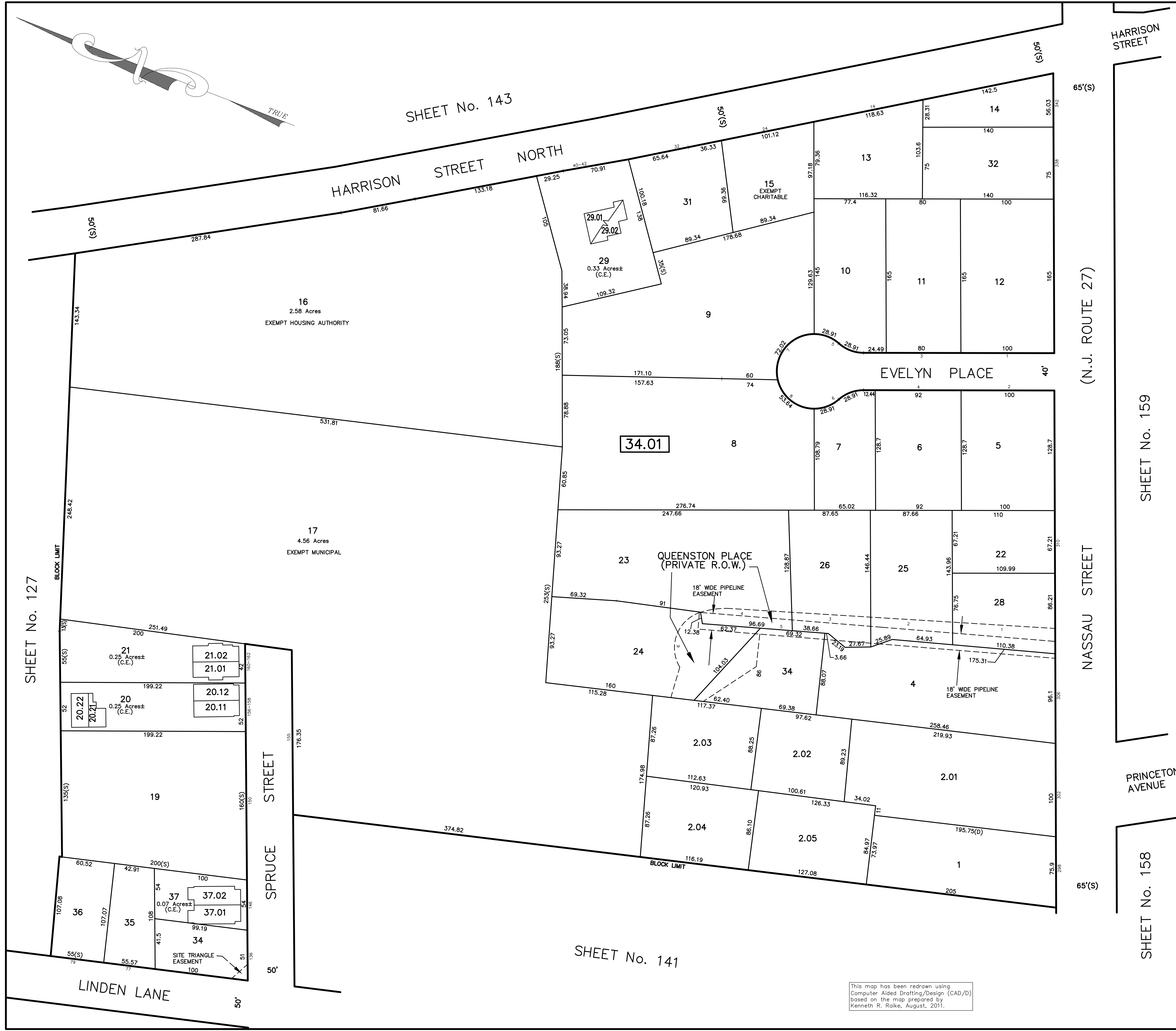


REVISIONS		
DATE	L.S. NAME	NO.
10/1/15	GREGORY SANDUSKY	GB36758
10/31/16	GREGORY SANDUSKY	GB36758
10/1/17	GREGORY SANDUSKY	GB36758
10/1/19	GREGORY SANDUSKY	GB36758
10/1/20	GREGORY SANDUSKY	GB36758
10/1/21	GREGORY SANDUSKY	GB36758

Block	Lot	Qualifier	Area	Address
34.01	20.11	C156	1,312 S.F.	156 SPRUCE STREET
34.01	20.12	C158	1,312 S.F.	158 SPRUCE STREET
34.01	20.21	C156A	1,044 S.F.	156A SPRUCE STREET
34.01	20.22	C156B	823 S.F.	156B SPRUCE STREET
34.01	21.01	C01	1,351 S.F.	160 SPRUCE STREET
34.01	21.02	C02	1,330 S.F.	162 SPRUCE STREET
34.01	29.01	C01	1,932 S.F.	40 NORTH HARRISON STREET
34.01	29.02	C02	1,932 S.F.	42 NORTH HARRISON STREET
34.01	37.01	C01	1,693 S.F.	140 SPRUCE STREET
34.01	37.02	C02	1,693 S.F.	142 SPRUCE STREET



THIS MAP SHEET HAS BEEN FORMALLY CERTIFIED FOR CONSOLIDATION ON 12/10/2012, ASSIGNED SERIAL NUMBER 1012, AND SIGNED BY SUE DAVIDSON (CTA SUPERVISING FIELD REPRESENTATIVE FOR THE STATE OF NEW JERSEY). A COPY OF THE ORIGINALLY APPROVED MAPS ARE ON FILE AT THE MUNICIPALITY OF PRINCETON LOCATED AT 400 WITHERSPOON STREET, PRINCETON, NJ. THE NEW JERSEY STATE DIVISION OF TAXATION IS RETAINING THE OFFICIAL APPROVED MAPS.

**TAX MAP PRINCETON**  
 MERCER COUNTY, NEW JERSEY  
 SCALE: 1" = 50'      OCTOBER, 2012  
 DAVID B. DIXON, PLS  
 Professional Land Surveyor N.J. Lic. No.27282  
 OMLAND ENGINEERING ASSOCIATES, INC.  
 CEDAR KNOLLS, NEW JERSEY  
 To Show Conditions as of October, 2012

This map has been redrawn using Computer Aided Drafting/Design (CAD/D) based on the map prepared by Kenneth R. Rolke, August, 2011.