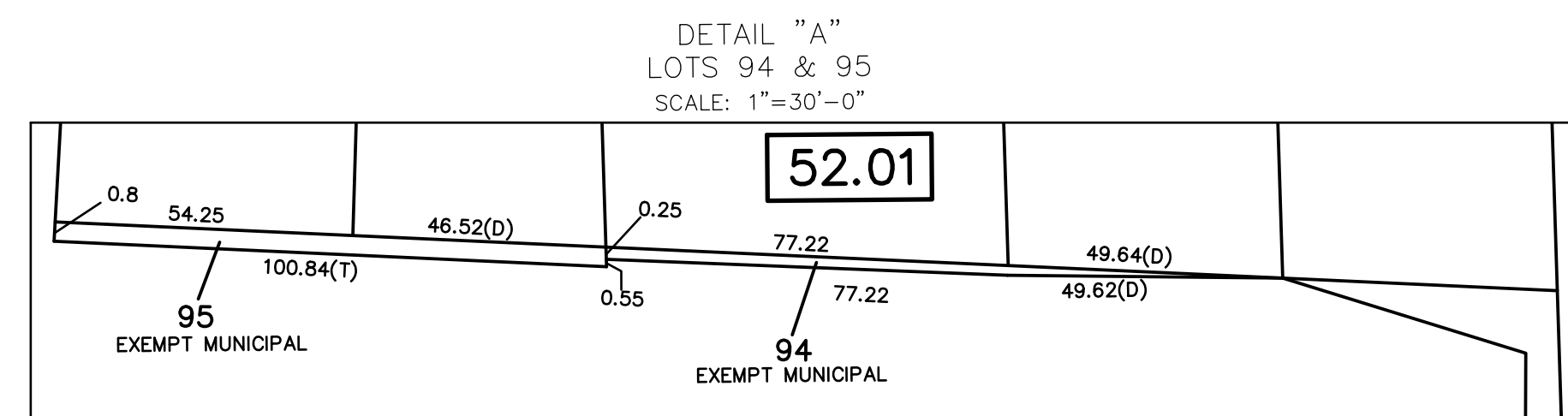


Block	Lot	Qualifier	Level	Area	Address
52.01	50.01	C01		1,930 S.F.	54 PATTON AVENUE
52.01	50.02	C02		1,930 S.F.	56 PATTON AVENUE
52.01	51.01	C01		1,590 S.F.	52A PATTON AVENUE
52.01	51.02	C02		1,590 S.F.	52B PATTON AVENUE
52.01	98.01	C08	Basement	1,024 S.F.	301 NASSAU STREET UNIT 8
52.01	98.11	C01	1st Floor	356 S.F.	301 NASSAU STREET UNIT 1
52.01	98.12	C02	1st Floor	504 S.F.	301 NASSAU STREET UNIT 2
52.01	98.13	C03	1st Floor	873 S.F.	301 NASSAU STREET UNIT 3
52.01	98.21	C04	2nd Floor	881 S.F.	301 NASSAU STREET UNIT 4
52.01	98.22	C05	2nd Floor	846 S.F.	301 NASSAU STREET UNIT 5
52.01	98.23	C06	2nd Floor	512 S.F.	301 NASSAU STREET UNIT 6
52.01	98.31	C07	3rd Floor	1,013 S.F.	301 NASSAU STREET UNIT 7
52.01	99.01	C01		1,691 S.F.	303 NASSAU STREET
52.01	99.02	C02		1,636 S.F.	305 NASSAU STREET

REVISIONS		
DATE	NAME	NO.
10/1/14	GREGORY SANDUSKY	GB36758
10/31/16	GREGORY SANDUSKY	GB36758
10/1/18	GREGORY SANDUSKY	GB36758
10/1/20	GREGORY SANDUSKY	GB36758



This map has been redrawn using Computer Aided Drafting/Design (CAD/D) based on the map prepared by Kenneth R. Raikes, August, 2011.

THIS MAP SHEET HAS BEEN FORMALLY CERTIFIED FOR CONSOLIDATION ON 12/10/2012, ASSIGNED SERIAL NUMBER 1012, AND SIGNED BY SUE DAVIDSON (CTA SUPERVISING FIELD REPRESENTATIVE FOR THE STATE OF NEW JERSEY). A COPY OF THE ORIGINALLY APPROVED MAPS ARE ON FILE AT THE MUNICIPALITY OF PRINCETON LOCATED AT 400 WITHERSPOON STREET, PRINCETON, N.J. THE NEW JERSEY STATE DIVISION OF TAXATION IS RETAINING THE OFFICIAL APPROVED MAPS.

TAX MAP PRINCETON
MERCER COUNTY, NEW JERSEY
SCALE: 1" = 50' OCTOBER, 2012
DAVID B. DIXON, PLS
Professional Land Surveyor N.J. Lic. No.27282
OMLAND ENGINEERING ASSOCIATES, INC.
CEDAR KNOLLS, NEW JERSEY
To Show Conditions as of October, 2012