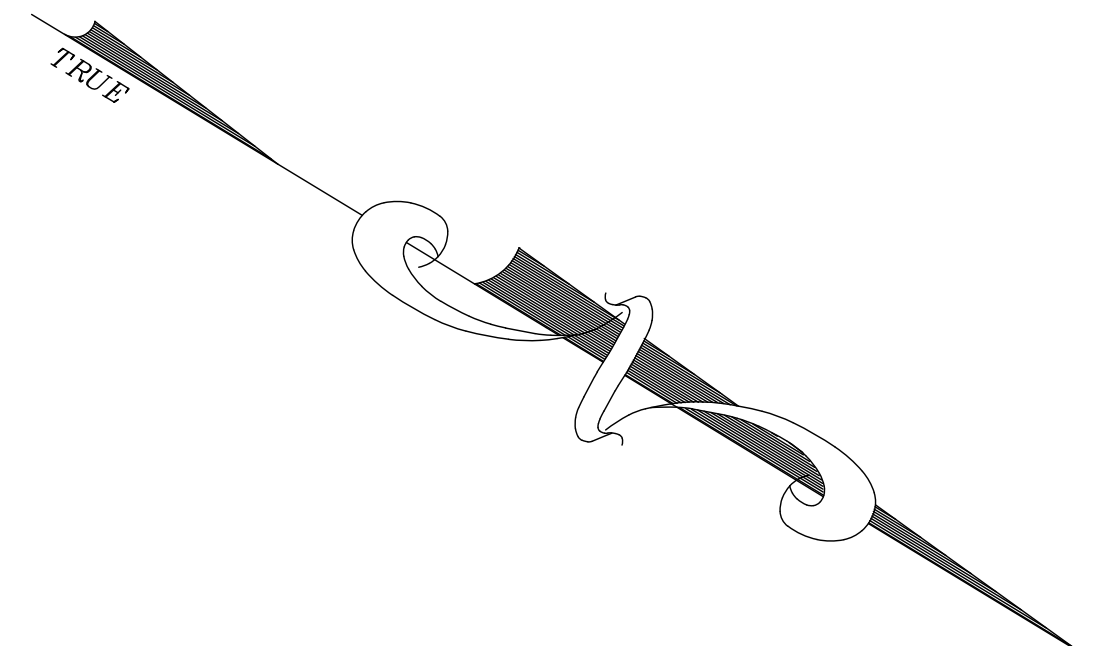
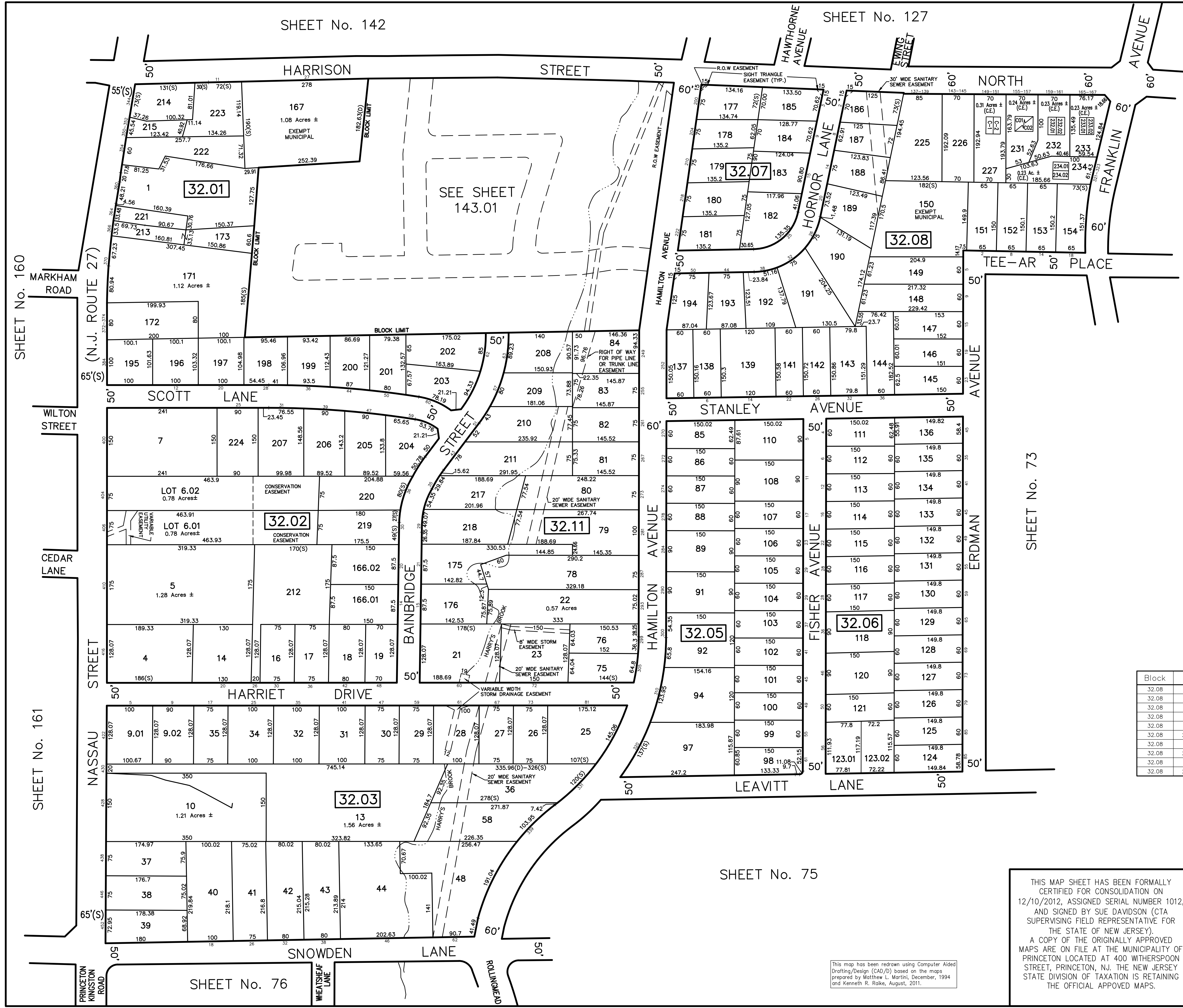


REVISIONS		
DATE	L.S. NAME	NO.
10/1/15	GREGORY SANDUSKY	GB36758
10/31/16	GREGORY SANDUSKY	GB36758
10/1/17	GREGORY SANDUSKY	GB36758
10/1/18	GREGORY SANDUSKY	GB36758
10/1/19	GREGORY SANDUSKY	GB36758



Block	Lot	Qualifier	Area	Address
32.08	227	C-1	1,085 S.F.	149 NORTH HARRISON STREET
32.08	227	C-2	1,085 S.F.	151 NORTH HARRISON STREET
32.08	231	C01	1,073 S.F.	155 N HARRISON STREET
32.08	231	C02	1,110 S.F.	157 N HARRISON STREET
32.08	232.01		900 S.F.	161 NORTH HARRISON STREET
32.08	232.02		900 S.F.	159 NORTH HARRISON STREET
32.08	233.01		1,120 S.F.	165 NORTH HARRISON STREET
32.08	233.02		1,120 S.F.	167 NORTH HARRISON STREET
32.08	234.01		1,216 S.F.	321 FRANKLIN AVENUE
32.08	234.02		1,356 S.F.	323 FRANKLIN AVENUE

This map has been redrawn using Computer Aided Drafting/Design (CAD/D) based on the maps prepared by Matthew L. Martini, December, 1994 and Kenneth R. Raika, August, 2011.

THIS MAP SHEET HAS BEEN FORMALLY CERTIFIED FOR CONSOLIDATION ON 12/10/2012, ASSIGNED SERIAL NUMBER 1012, AND SIGNED BY SUE DAVIDSON (CTA SUPERVISING FIELD REPRESENTATIVE FOR THE STATE OF NEW JERSEY). A COPY OF THE ORIGINALLY APPROVED MAPS ARE ON FILE AT THE MUNICIPALITY OF PRINCETON LOCATED AT 400 WITHERSPOON STREET, PRINCETON, NJ. THE NEW JERSEY STATE DIVISION OF TAXATION IS RETAINING THE OFFICIAL APPROVED MAPS.

TAX MAP PRINCETON
 MERCER COUNTY, NEW JERSEY
 SCALE: 1" = 100' OCTOBER, 2012
 DAVID B. DIXON, PLS
 Professional Land Surveyor N.J. Lic. No.27282
 OMLAND ENGINEERING ASSOCIATES, INC.
 CEDAR KNOLLS, NEW JERSEY
 To Show Conditions as of October, 2012