

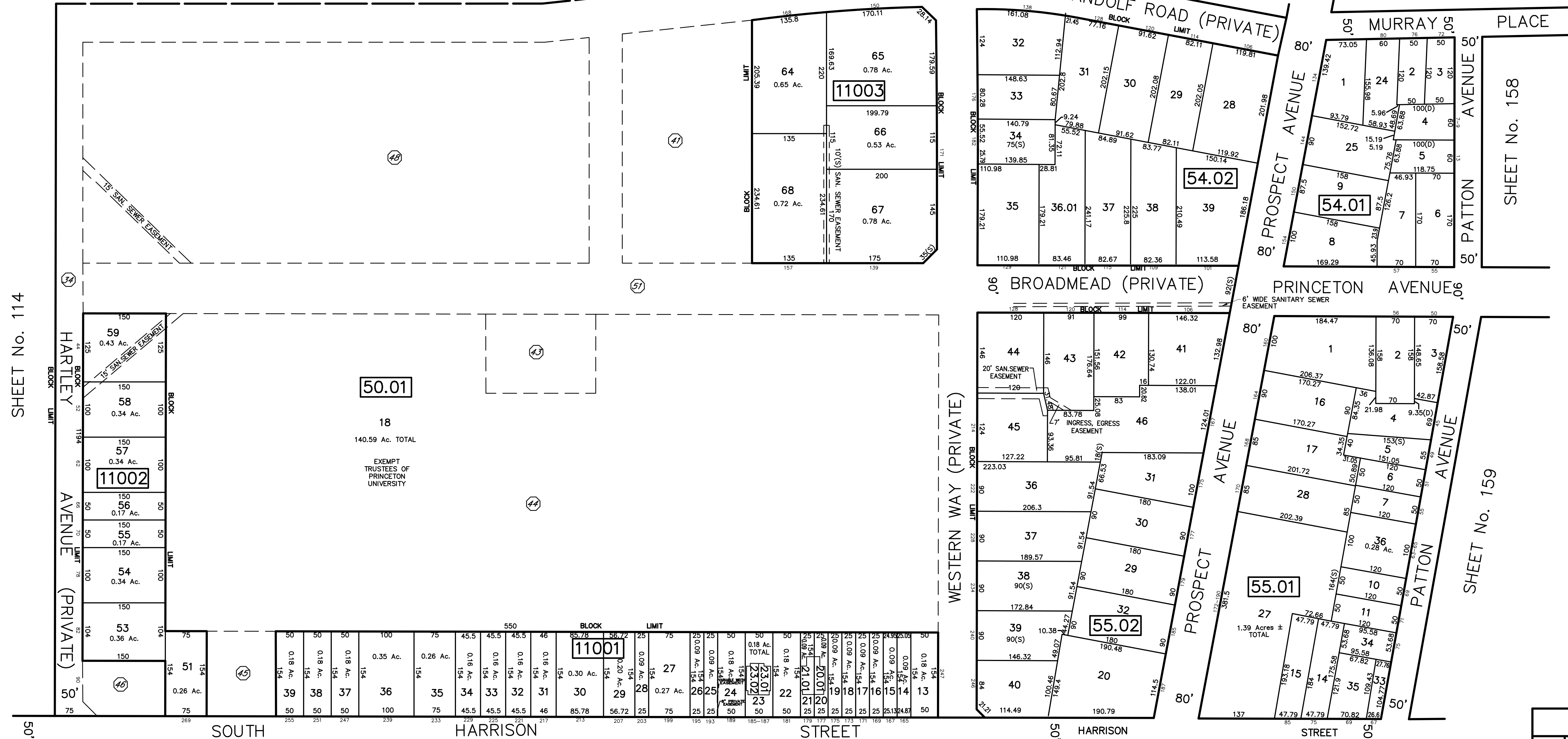
SHEET No. 116

MATCH LINE

SHEET No. 109

SHEET No. 157

SHEET No. 114



50.01

18  
140.59 Ac. TOTAL  
EXEMPT TRUSTEES OF PRINCETON UNIVERSITY

11001

54.02

54.01

55.01

55.02

REVISIONS

DATE	NAME	NO.
10/1/14	GREGORY SANDUSKY	0836706
10/3/16	GREGORY SANDUSKY	0836706
10/1/17	GREGORY SANDUSKY	0836706
10/1/18	GREGORY SANDUSKY	0836706
10/1/18	GREGORY SANDUSKY	0836706

SHEET No. 87

BLOCK	LOT	Qualifier	Building Association	Acres
50.01	18	D44	HARTLEY + FITZ ROAD	2.20 Ac.
		D41	171 BROADMEAD	2.31 Ac.
		D43	BROADMEAD POOL	0.65 Ac.
		D44	BROADMEAD	17.83 Ac.
		D45	263 S. HARRISON ST.	0.44 Ac.
		D46	90 HARTLEY AVE.	0.34 Ac.
		D48	BROADMEAD DRAINAGE BASIN	6.15 Ac.
		D49	CHILDCARE CONSTRUCTION	2.28 Ac.
		D50	CHILDCARE LOT CONSTRUCTION	0.57 Ac.
		D51	BROADMEAD + FITZ RD.	3.27 Ac.

QUALIFIER LEGEND  
DENOTES QUALIFIER NUMBER

Block	Lot	Qualifier	Area	Address
11001	20.01	C01	1,816 S.F.	177 SOUTH HARRISON STREET
11001	21.01	C01	1,816 S.F.	179 SOUTH HARRISON STREET
11001	23.01		1,600 S.F.	185 SOUTH HARRISON STREET
11001	23.02		1,600 S.F.	187 SOUTH HARRISON STREET

This map has been redrawn using Computer Aided Drafting/Design (CAD/D) based on the map prepared by Matthew L. Martini, December, 1994.

THIS MAP SHEET HAS BEEN FORMALLY CERTIFIED FOR CONSOLIDATION ON 12/10/2012, ASSIGNED SERIAL NUMBER 1012, AND SIGNED BY SUE DAVIDSON (CTA SUPERVISING FIELD REPRESENTATIVE FOR THE STATE OF NEW JERSEY). A COPY OF THE ORIGINALLY APPROVED MAPS ARE ON FILE AT THE MUNICIPALITY OF PRINCETON LOCATED AT 400 WITHERSPOON STREET, PRINCETON, N.J. THE NEW JERSEY STATE DIVISION OF TAXATION IS RETAINING THE OFFICIAL APPROVED MAPS.

TAX MAP PRINCETON

MERCER COUNTY, NEW JERSEY  
 SCALE: 1" = 100' OCTOBER, 2012  
 DAVID B. DIXON, PLS  
 Professional Land Surveyor N.J. Lic. No.27282  
 OMLAND ENGINEERING ASSOCIATES, INC.  
 CEDAR KNOLLS, NEW JERSEY  
 To Show Conditions as of October, 2012