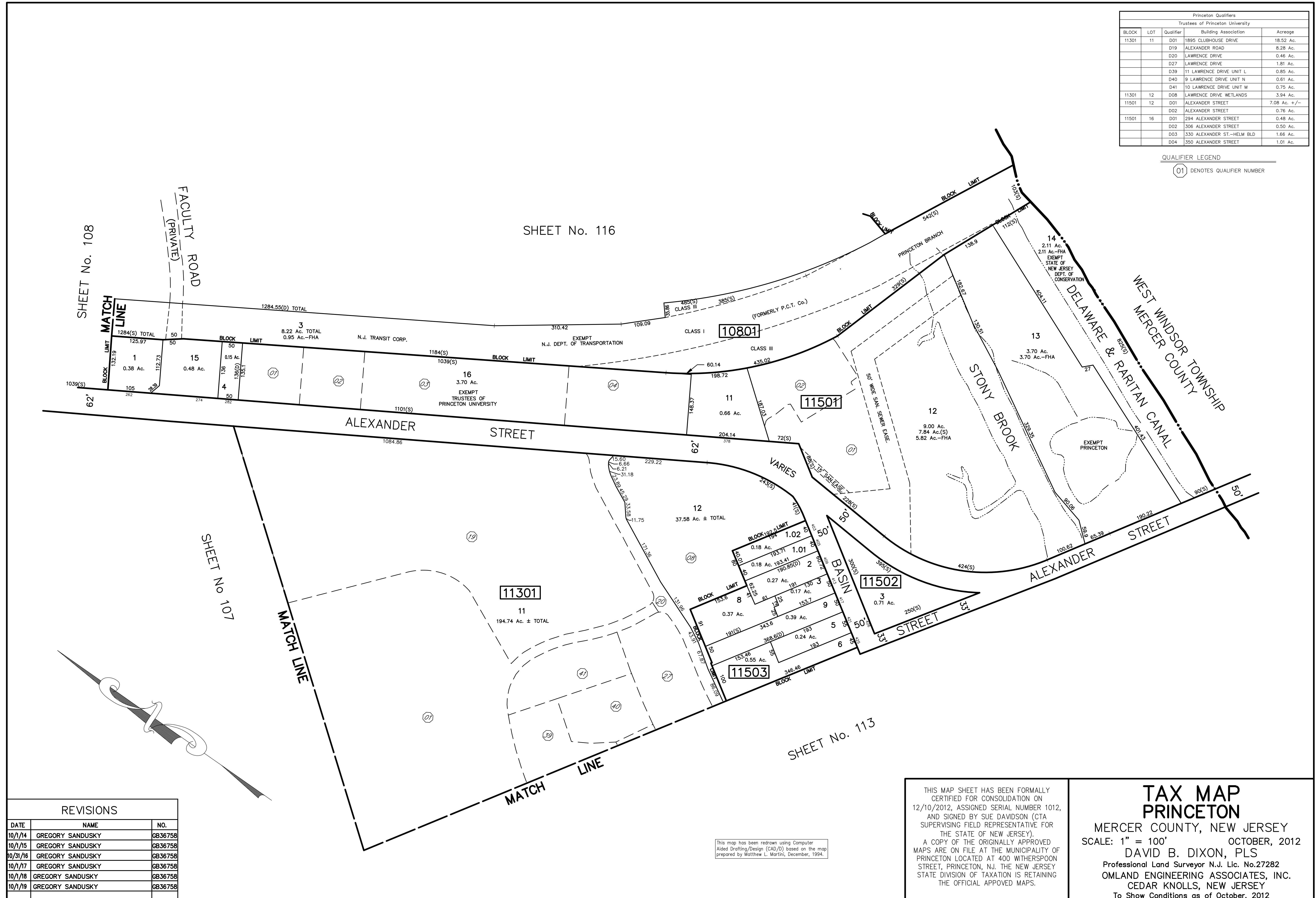


Princeton Qualifiers				
Trustees of Princeton University				
BLOCK	LOT	Qualifier	Building Association	Acreage
11301	11	D01	1895 CLUBHOUSE DRIVE	18.52 Ac.
		D19	ALEXANDER ROAD	8.28 Ac.
		D20	LAWRENCE DRIVE	0.46 Ac.
		D27	LAWRENCE DRIVE	1.81 Ac.
		D39	11 LAWRENCE DRIVE UNIT L	0.85 Ac.
		D40	9 LAWRENCE DRIVE UNIT N	0.61 Ac.
		D41	10 LAWRENCE DRIVE UNIT M	0.75 Ac.
11301	12	D08	LAWRENCE DRIVE WETLANDS	3.94 Ac.
11501	12	D01	ALEXANDER STREET	7.08 Ac. +/-
		D02	ALEXANDER STREET	0.76 Ac.
11501	16	D01	294 ALEXANDER STREET	0.48 Ac.
		D02	306 ALEXANDER STREET	0.50 Ac.
		D03	330 ALEXANDER ST.-HELM BLD	1.66 Ac.
		D04	350 ALEXANDER STREET	1.01 Ac.

QUALIFIER LEGEND  
 (01) DENOTES QUALIFIER NUMBER



SHEET No. 116

SHEET No. 108

SHEET No. 107

SHEET No. 113

REVISIONS		
DATE	NAME	NO.
10/1/14	GREGORY SANDUSKY	GB36758
10/1/15	GREGORY SANDUSKY	GB36758
10/31/16	GREGORY SANDUSKY	GB36758
10/1/17	GREGORY SANDUSKY	GB36758
10/1/18	GREGORY SANDUSKY	GB36758
10/1/19	GREGORY SANDUSKY	GB36758

This map has been redrawn using Computer Aided Drafting/Design (CAD/D) based on the map prepared by Matthew L. Martini, December, 1994.

THIS MAP SHEET HAS BEEN FORMALLY CERTIFIED FOR CONSOLIDATION ON 12/10/2012, ASSIGNED SERIAL NUMBER 1012, AND SIGNED BY SUE DAVIDSON (CTA SUPERVISING FIELD REPRESENTATIVE FOR THE STATE OF NEW JERSEY). A COPY OF THE ORIGINALLY APPROVED MAPS ARE ON FILE AT THE MUNICIPALITY OF PRINCETON LOCATED AT 400 WITHERSPOON STREET, PRINCETON, NJ. THE NEW JERSEY STATE DIVISION OF TAXATION IS RETAINING THE OFFICIAL APPROVED MAPS.

**TAX MAP**  
**PRINCETON**  
 MERCER COUNTY, NEW JERSEY  
 SCALE: 1" = 100'      OCTOBER, 2012  
 DAVID B. DIXON, PLS  
 Professional Land Surveyor N.J. Lic. No.27282  
 OMLAND ENGINEERING ASSOCIATES, INC.  
 CEDAR KNOLLS, NEW JERSEY  
 To Show Conditions as of October, 2012