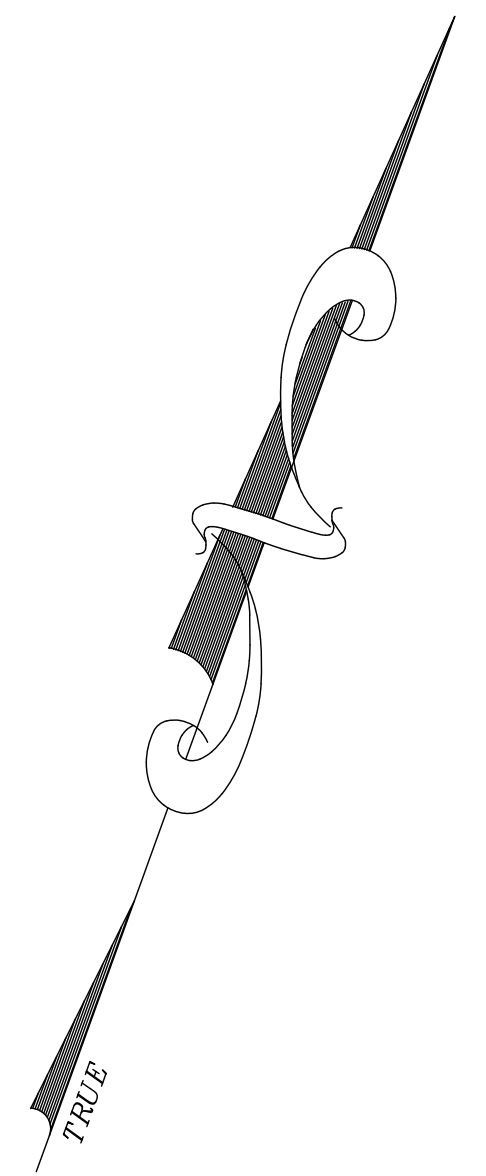
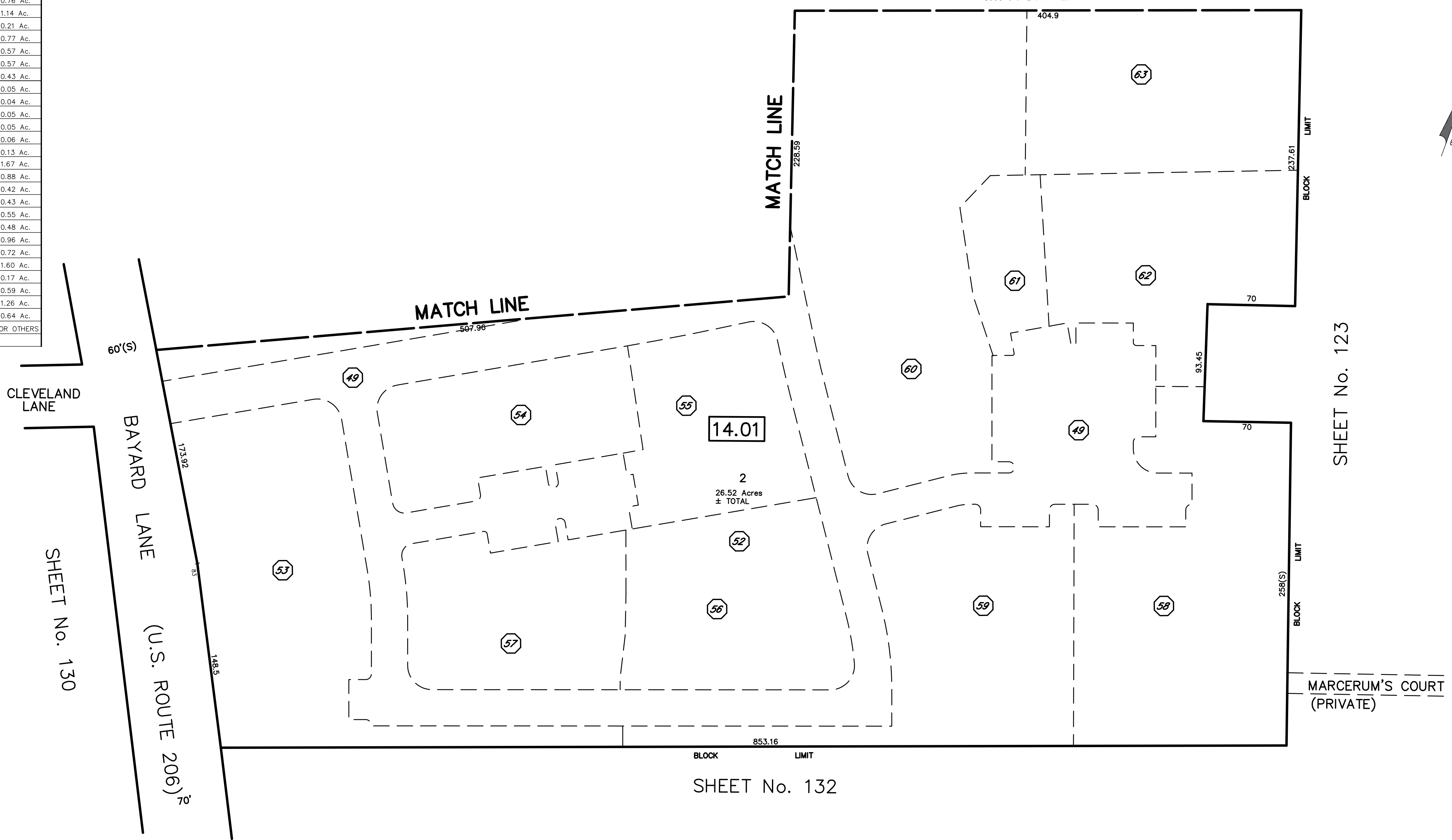


Princeton Qualifiers				
Trustees of Princeton University				
BLOCK	LOT	Qualifier	Building Association	Acres
14.01	2	D01	117-131 BAYARD LANE	0.54 Ac.
		D02	100-108 BAYARD LANE	0.57 Ac.
		D03	112-118 BAYARD LANE	0.34 Ac.
		D04	120-132 BAYARD LANE	0.51 Ac.
		D05	56-68/134-138 STANWORTH	0.59 Ac.
		D06	48-54 STANWORTH	0.58 Ac.
		D07	40-46 STANWORTH	0.31 Ac.
		D08	41-43 STANWORTH	0.10 Ac.
		D09	49-53 STANWORTH	0.24 Ac.
		D10	59-67/140-144 STANWORTH	0.55 Ac.
		D11	146-160 N STANWORTH	0.56 Ac.
		D12	162-168 N STANWORTH	0.57 Ac.
		D13	170-182/200 STANWORTH	0.40 Ac.
		D14	202-216 E STANWORTH	0.52 Ac.
		D15	260-262/300-312 STANWORTH	0.63 Ac.
		D16	314-328/31-33 STANWORTH	0.88 Ac.
		D17	30-32/352-358 STANWORTH	0.76 Ac.
		D18	360-382 STANWORTH 115 BAY	1.14 Ac.
		D19	107-113 BAYARD LANE	0.21 Ac.
		D20	97-105 BAYARD/371-377 STAN	0.77 Ac.
		D21	359-369 STANWORTH	0.57 Ac.
		D22	351-357/14-16 STANWORTH	0.57 Ac.
		D23	2-10 STANWORTH	0.43 Ac.
		D37	STANWORTH GAR #21+22+23	0.05 Ac.
		D38	STANWORTH GAR #24+25+26	0.04 Ac.
		D39	STANWORTH GAR #27+28+29+30	0.05 Ac.
		D40	STANWORTH GAR #31+32+33+34	0.05 Ac.
		D41	STANWORTH GAR #35+36+37	0.06 Ac.
		D42	STANWORTH GAR #38+39+40	0.13 Ac.
		D49	STANWORTH R.O.W.	1.67 Ac.
		D53	100 STANWORTH	0.88 Ac.
		D54	100-114 OAK LN.	0.42 Ac.
		D55	114-122 STANWORTH	0.43 Ac.
		D56	113 STANWORTH	0.55 Ac.
		D57	103-122 STANWORTH	0.48 Ac.
		D58	15-25 EAST MERWICK CT.	0.96 Ac.
		D59	1-13 EAST MERWICK CT.	0.72 Ac.
		D60	115 STANWORTH	1.60 Ac.
		D61	39-41 EAST MERWICK CT.	0.17 Ac.
		D62	27-38 EAST MERWICK CT.	0.59 Ac.
		D63	200-216 STANWORTH	1.26 Ac.
		D64	STANWORTH NORTH	0.64 Ac.
			SEE SH. 120 MATCH LINE FOR OTHERS	

SHEET No. 120



SHEET No. 123

SHEET No. 132

REVISIONS		
DATE	L.S. NAME	NO.
10/1/18	GREGORY SANDUSKY	GB36758

This map has been redrawn using Computer Aided Drafting/Design (CAD/D) based on the map prepared by Kenneth R. Rolke, August, 2011.

THIS MAP SHEET HAS BEEN FORMALLY CERTIFIED FOR CONSOLIDATION ON 12/10/2012, ASSIGNED SERIAL NUMBER 1012, AND SIGNED BY SUE DAVIDSON (CTA SUPERVISING FIELD REPRESENTATIVE FOR THE STATE OF NEW JERSEY). A COPY OF THE ORIGINALLY APPROVED MAPS ARE ON FILE AT THE MUNICIPALITY OF PRINCETON LOCATED AT 400 WITHERSPOON STREET, PRINCETON, NJ. THE NEW JERSEY STATE DIVISION OF TAXATION IS RETAINING THE OFFICIAL APPROVED MAPS.

TAX MAP PRINCETON
 MERCER COUNTY, NEW JERSEY
 SCALE: 1" = 50' OCTOBER, 2012
 DAVID B. DIXON, PLS
 Professional Land Surveyor N.J. Lic. No.27282
 OMLAND ENGINEERING ASSOCIATES, INC.
 CEDAR KNOLLS, NEW JERSEY
 To Show Conditions as of October, 2012