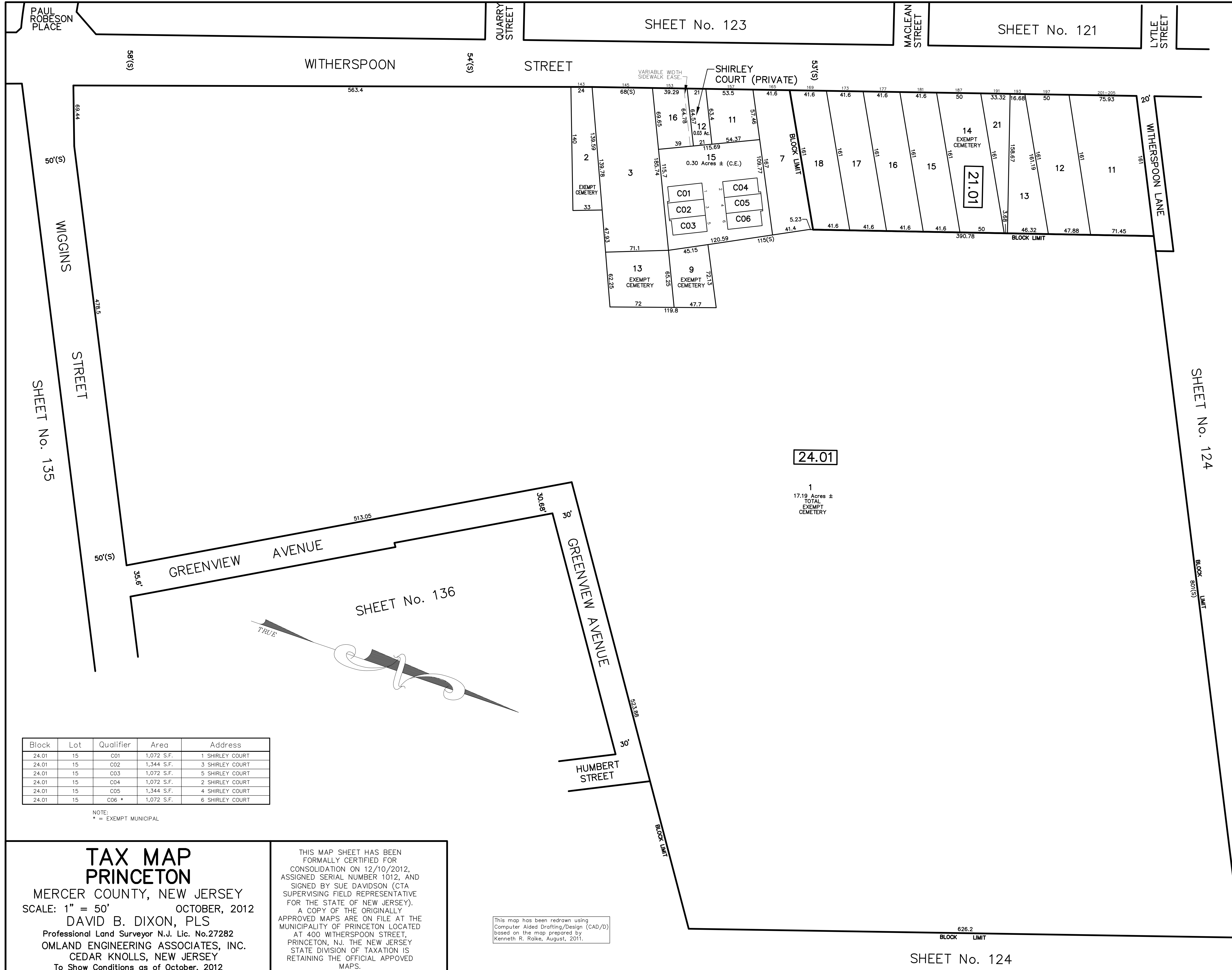


REVISIONS		
DATE	L.S. NAME	NO.
10/31/16	GREGORY SANDUSKY	GB36758
10/1/17	GREGORY SANDUSKY	GB36758



Block	Lot	Qualifier	Area	Address
24.01	15	C01	1,072 S.F.	1 SHIRLEY COURT
24.01	15	C02	1,344 S.F.	3 SHIRLEY COURT
24.01	15	C03	1,072 S.F.	5 SHIRLEY COURT
24.01	15	C04	1,072 S.F.	2 SHIRLEY COURT
24.01	15	C05	1,344 S.F.	4 SHIRLEY COURT
24.01	15	C06 *	1,072 S.F.	6 SHIRLEY COURT

NOTE:
* = EXEMPT MUNICIPAL

TAX MAP
PRINCETON
MERCER COUNTY, NEW JERSEY
SCALE: 1" = 50' OCTOBER, 2012
DAVID B. DIXON, PLS
Professional Land Surveyor N.J. Lic. No.27282
OMLAND ENGINEERING ASSOCIATES, INC.
CEDAR KNOLLS, NEW JERSEY
To Show Conditions as of October, 2012

THIS MAP SHEET HAS BEEN FORMALLY CERTIFIED FOR CONSOLIDATION ON 12/10/2012, ASSIGNED SERIAL NUMBER 1012, AND SIGNED BY SUE DAVIDSON (CTA SUPERVISING FIELD REPRESENTATIVE FOR THE STATE OF NEW JERSEY). A COPY OF THE ORIGINALLY APPROVED MAPS ARE ON FILE AT THE MUNICIPALITY OF PRINCETON LOCATED AT 400 WITHERSPOON STREET, PRINCETON, N.J. THE NEW JERSEY STATE DIVISION OF TAXATION IS RETAINING THE OFFICIAL APPROVED MAPS.

This map has been redrawn using Computer Aided Drafting/Design (CAD/D) based on the map prepared by Kenneth R. Roike, August, 2011.

SHEET No. 123

SHEET No. 121

24.01

1
17.19 Acres ±
TOTAL
EXEMPT
CEMETERY

626.2
BLOCK LIMIT

SHEET No. 124