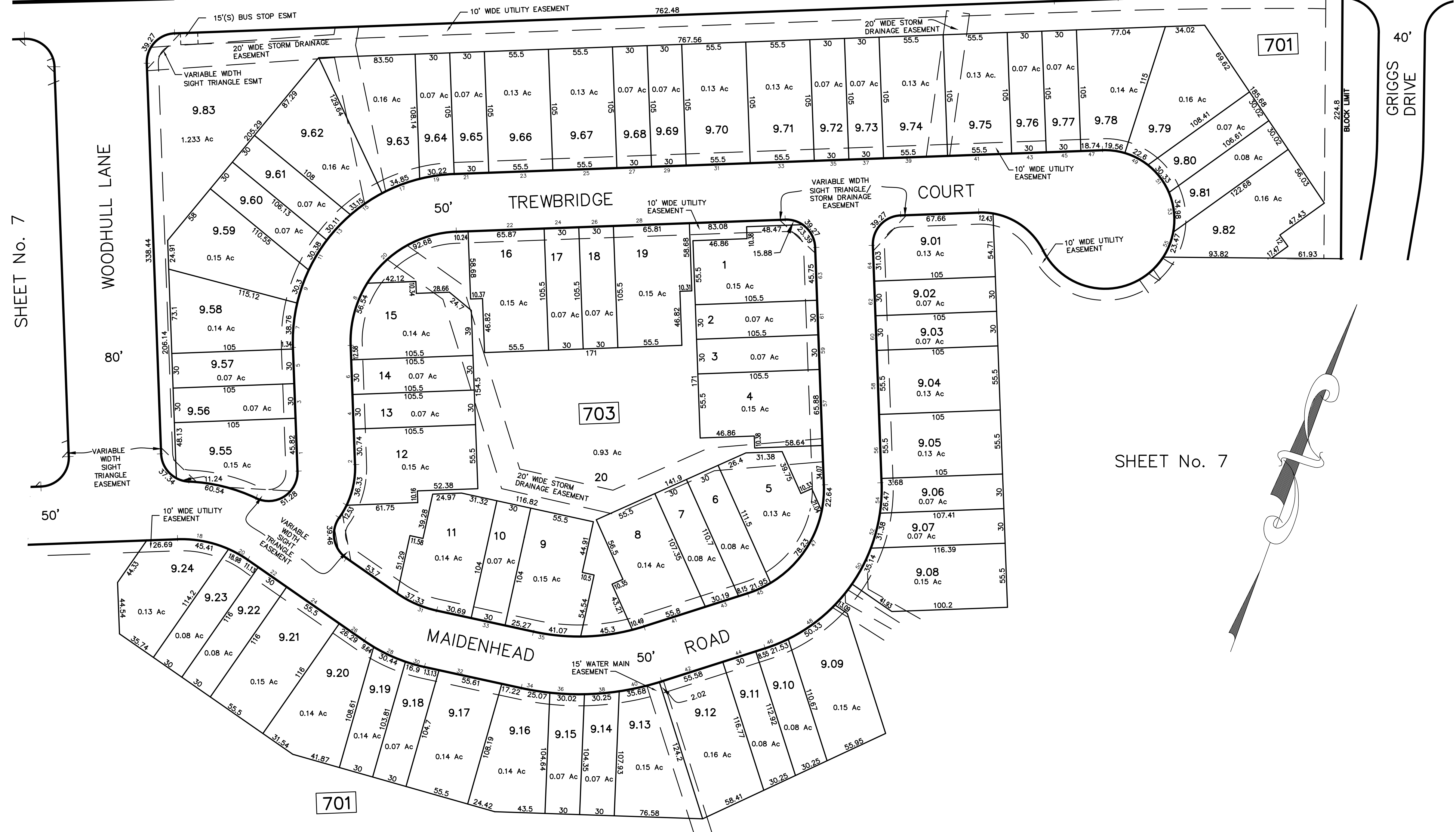


MONTGOMERY TOWNSHIP
SOMERSET COUNTY

CHERRY VALLEY ROAD

46.5'



SHEET No. 7

SHEET No. 8

SHEET No. 7

SHEET No. 7

Block	Lot	Area	Address
701	9.01	2,350 S.F.	64 MAIDENHEAD ROAD
701	9.02	2,364 S.F.	62 MAIDENHEAD ROAD
701	9.03	2,364 S.F.	60 MAIDENHEAD ROAD
701	9.04	2,350 S.F.	58 MAIDENHEAD ROAD
701	9.05	2,350 S.F.	56 MAIDENHEAD ROAD
701	9.06	2,364 S.F.	54 MAIDENHEAD ROAD
701	9.07	2,364 S.F.	52 MAIDENHEAD ROAD
701	9.08	2,350 S.F.	50 MAIDENHEAD ROAD
701	9.09	2,350 S.F.	48 MAIDENHEAD ROAD
701	9.10	1,846 S.F.	46 MAIDENHEAD ROAD
701	9.11	2,364 S.F.	44 MAIDENHEAD ROAD
701	9.12	2,350 S.F.	42 MAIDENHEAD ROAD
701	9.13	2,350 S.F.	40 MAIDENHEAD ROAD
701	9.14	2,364 S.F.	38 MAIDENHEAD ROAD
701	9.15	2,364 S.F.	36 MAIDENHEAD ROAD
701	9.16	2,350 S.F.	34 MAIDENHEAD ROAD
701	9.17	2,350 S.F.	32 MAIDENHEAD ROAD
701	9.18	2,054 S.F.	30 MAIDENHEAD ROAD
701	9.19	2,364 S.F.	28 MAIDENHEAD ROAD
701	9.20	2,350 S.F.	26 MAIDENHEAD ROAD
701	9.21	2,350 S.F.	24 MAIDENHEAD ROAD
701	9.22	2,364 S.F.	22 MAIDENHEAD ROAD
701	9.23	1,846 S.F.	20 MAIDENHEAD ROAD
701	9.24	2,350 S.F.	18 MAIDENHEAD ROAD
701	9.55	2,350 S.F.	1 TREWBRIDGE COURT
701	9.56	2,364 S.F.	3 TREWBRIDGE COURT
701	9.57	1,846 S.F.	5 TREWBRIDGE COURT
701	9.58	2,350 S.F.	7 TREWBRIDGE COURT
701	9.59	2,350 S.F.	9 TREWBRIDGE COURT
701	9.60	2,364 S.F.	11 TREWBRIDGE COURT
701	9.61	2,364 S.F.	13 TREWBRIDGE COURT
701	9.62	2,350 S.F.	15 TREWBRIDGE COURT
701	9.63	2,350 S.F.	17 TREWBRIDGE COURT
701	9.64	2,364 S.F.	19 TREWBRIDGE COURT
701	9.65	2,364 S.F.	21 TREWBRIDGE COURT
701	9.66	2,350 S.F.	23 TREWBRIDGE COURT
701	9.67	2,350 S.F.	25 TREWBRIDGE COURT
701	9.68	2,364 S.F.	27 TREWBRIDGE COURT
701	9.69	2,364 S.F.	29 TREWBRIDGE COURT
701	9.70	2,350 S.F.	31 TREWBRIDGE COURT
701	9.71	2,350 S.F.	33 TREWBRIDGE COURT
701	9.72	2,364 S.F.	35 TREWBRIDGE COURT
701	9.73	2,054 S.F.	37 TREWBRIDGE COURT
701	9.74	2,350 S.F.	39 TREWBRIDGE COURT
701	9.75	2,350 S.F.	41 TREWBRIDGE COURT
701	9.76	2,364 S.F.	43 TREWBRIDGE COURT
701	9.77	2,364 S.F.	45 TREWBRIDGE COURT
701	9.78	2,350 S.F.	47 TREWBRIDGE COURT
701	9.79	2,350 S.F.	49 TREWBRIDGE COURT
701	9.80	2,054 S.F.	51 TREWBRIDGE COURT
701	9.81	2,364 S.F.	53 TREWBRIDGE COURT
701	9.82	2,350 S.F.	55 TREWBRIDGE COURT

Block	Lot	Area	Address
703	1	2,350 S.F.	63 MAIDENHEAD ROAD
703	2	1,846 S.F.	61 MAIDENHEAD ROAD
703	3	2,364 S.F.	59 MAIDENHEAD ROAD
703	4	2,350 S.F.	57 MAIDENHEAD ROAD
703	5	2,350 S.F.	47 MAIDENHEAD ROAD
703	6	2,364 S.F.	45 MAIDENHEAD ROAD
703	7	2,364 S.F.	43 MAIDENHEAD ROAD
703	8	2,350 S.F.	41 MAIDENHEAD ROAD
703	9	2,350 S.F.	35 MAIDENHEAD ROAD
703	10	1,846 S.F.	33 MAIDENHEAD ROAD
703	11	2,350 S.F.	31 MAIDENHEAD ROAD
703	12	2,350 S.F.	2 TREWBRIDGE COURT
703	13	2,364 S.F.	4 TREWBRIDGE COURT
703	14	2,364 S.F.	6 TREWBRIDGE COURT
703	15	2,350 S.F.	8 TREWBRIDGE COURT
703	16	2,350 S.F.	22 TREWBRIDGE COURT
703	17	2,364 S.F.	24 TREWBRIDGE COURT
703	18	1,846 S.F.	26 TREWBRIDGE COURT
703	19	2,350 S.F.	28 TREWBRIDGE COURT

REVISIONS		
DATE	L.S. NAME	NO.

This map has been redrawn using Computer Aided Drafting/Design (CAD/D) based on the map prepared by Matthew L. Martini, December, 1994.

THIS MAP SHEET HAS BEEN FORMALLY CERTIFIED FOR CONSOLIDATION ON 12/10/2012, ASSIGNED SERIAL NUMBER 1012, AND SIGNED BY SUE DAVIDSON (CTA SUPERVISING FIELD REPRESENTATIVE FOR THE STATE OF NEW JERSEY). A COPY OF THE ORIGINALLY APPROVED MAPS ARE ON FILE AT THE MUNICIPALITY OF PRINCETON LOCATED AT 400 WITHERSPOON STREET, PRINCETON, NJ. THE NEW JERSEY STATE DIVISION OF TAXATION IS RETAINING THE OFFICIAL APPROVED MAPS.

TAX MAP PRINCETON
MERCER COUNTY, NEW JERSEY
SCALE: 1" = 50' OCTOBER, 2012
DAVID B. DIXON, PLS
Professional Land Surveyor N.J. Lic. No.27282
OMLAND ENGINEERING ASSOCIATES, INC.
CEDAR KNOLLS, NEW JERSEY
To Show Conditions as of October, 2012