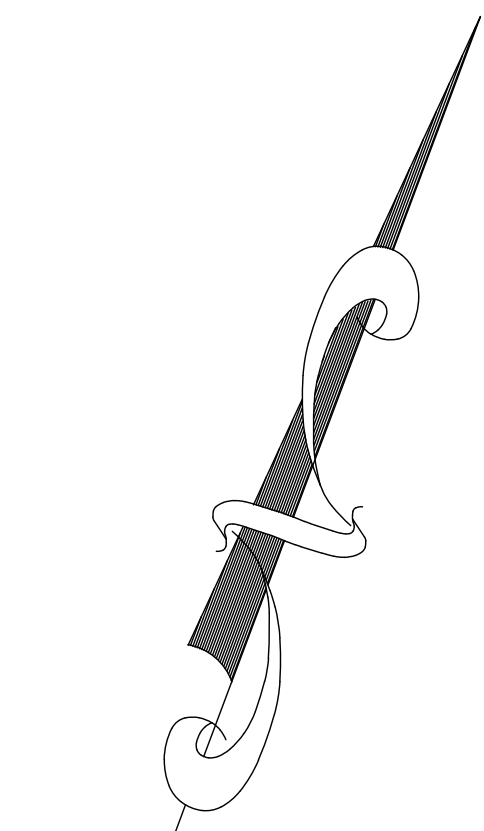


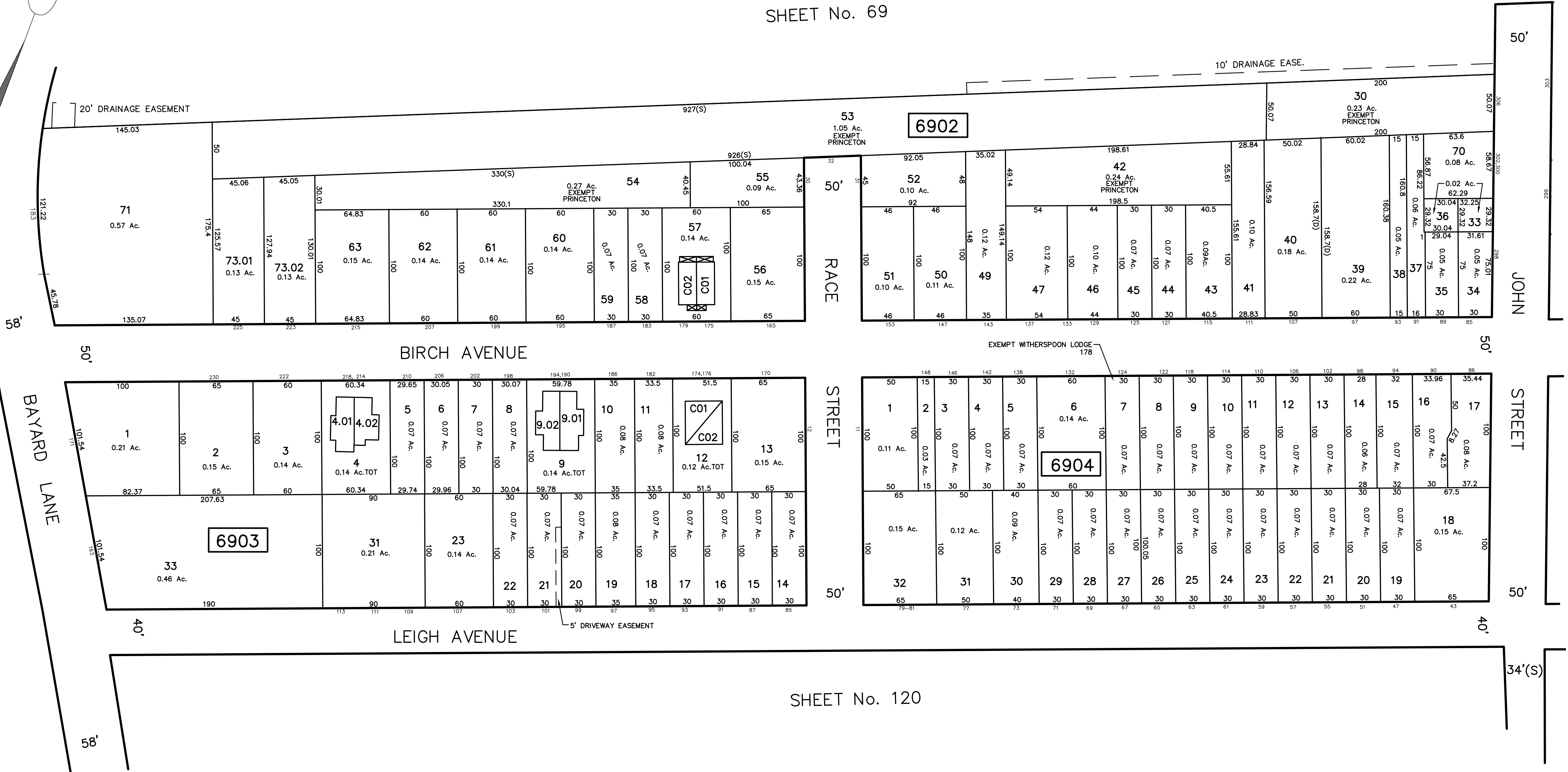
SHEET No. 69

SHEET No. 69.02

SHEET No. 120



SHEET No. 68



REVISIONS		
DATE	L.S. NAME	NO.
10/1/14	GREGORY SANDUSKY	GB36758
10/31/16	GREGORY SANDUSKY	GB36758
10/1/17	GREGORY SANDUSKY	GB36758
10/1/19	GREGORY SANDUSKY	GB36758

Block	Lot	Qualifier	Area	Address
6902	57	C01	1,173 S.F.	175 BIRCH AVE
6902	57	C02	1,173 S.F.	179 BIRCH AVE
6903	4.01	C01	756 S.F.	218 BIRCH AVE
6903	4.02	C02	756 S.F.	214 BIRCH AVE
6903	9.01		1,440 S.F.	190 BIRCH AVE
6903	9.02		1,416 S.F.	194 BIRCH AVE
6903	12	C01	1,184 S.F.	174 BIRCH AVE
6903	12	C02	1,888 S.F.	178 BIRCH AVE

This map has been redrawn using Computer Aided Drafting/Design (CAD/D) based on the map prepared by Matthew L. Marini, December, 1994.

THIS MAP SHEET HAS BEEN FORMALLY CERTIFIED FOR CONSOLIDATION ON 12/10/2012, ASSIGNED SERIAL NUMBER 1012, AND SIGNED BY SUE DAVIDSON (CTA SUPERVISING FIELD REPRESENTATIVE FOR THE STATE OF NEW JERSEY). A COPY OF THE ORIGINALLY APPROVED MAPS ARE ON FILE AT THE MUNICIPALITY OF PRINCETON LOCATED AT 400 WITHERSPOON STREET, PRINCETON, NJ. THE NEW JERSEY STATE DIVISION OF TAXATION IS RETAINING THE OFFICIAL APPROVED MAPS.

TAX MAP PRINCETON
 MERCER COUNTY, NEW JERSEY
 SCALE: 1" = 50' OCTOBER, 2012
 DAVID B. DIXON, PLS
 Professional Land Surveyor N.J. Lic. No.27282
 OMLAND ENGINEERING ASSOCIATES, INC.
 CEDAR KNOLLS, NEW JERSEY
 To Show Conditions as of October, 2012