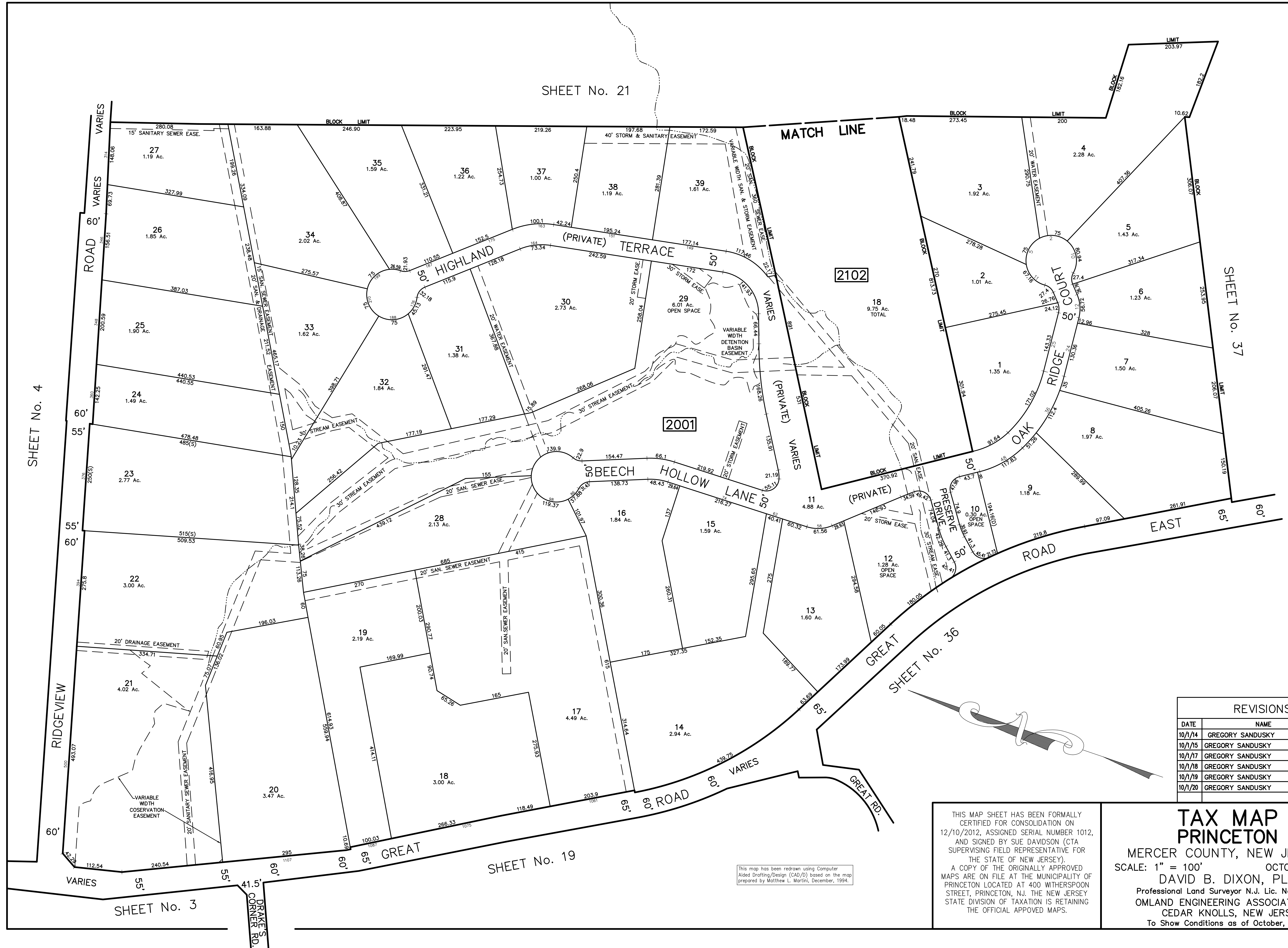


SHEET No. 21



| REVISIONS | | |
|-----------|------------------|---------|
| DATE | NAME | NO. |
| 10/1/14 | GREGORY SANDUSKY | GB36758 |
| 10/1/15 | GREGORY SANDUSKY | GB36758 |
| 10/1/17 | GREGORY SANDUSKY | GB36758 |
| 10/1/18 | GREGORY SANDUSKY | GB36758 |
| 10/1/19 | GREGORY SANDUSKY | GB36758 |
| 10/1/20 | GREGORY SANDUSKY | GB36758 |

THIS MAP SHEET HAS BEEN FORMALLY CERTIFIED FOR CONSOLIDATION ON 12/10/2012, ASSIGNED SERIAL NUMBER 1012, AND SIGNED BY SUE DAVIDSON (CTA SUPERVISING FIELD REPRESENTATIVE FOR THE STATE OF NEW JERSEY). A COPY OF THE ORIGINALLY APPROVED MAPS ARE ON FILE AT THE MUNICIPALITY OF PRINCETON LOCATED AT 400 WITHERSPOON STREET, PRINCETON, NJ. THE NEW JERSEY STATE DIVISION OF TAXATION IS RETAINING THE OFFICIAL APPROVED MAPS.

TAX MAP
PRINCETON
 MERCER COUNTY, NEW JERSEY
 SCALE: 1" = 100' OCTOBER, 2012
 DAVID B. DIXON, PLS
 Professional Land Surveyor N.J. Lic. No.27282
 OMLAND ENGINEERING ASSOCIATES, INC.
 CEDAR KNOLLS, NEW JERSEY
 To Show Conditions as of October, 2012

This map has been redrawn using Computer Aided Drafting/Design (CAD/D) based on the map prepared by Matthew L. Martini, December, 1994.