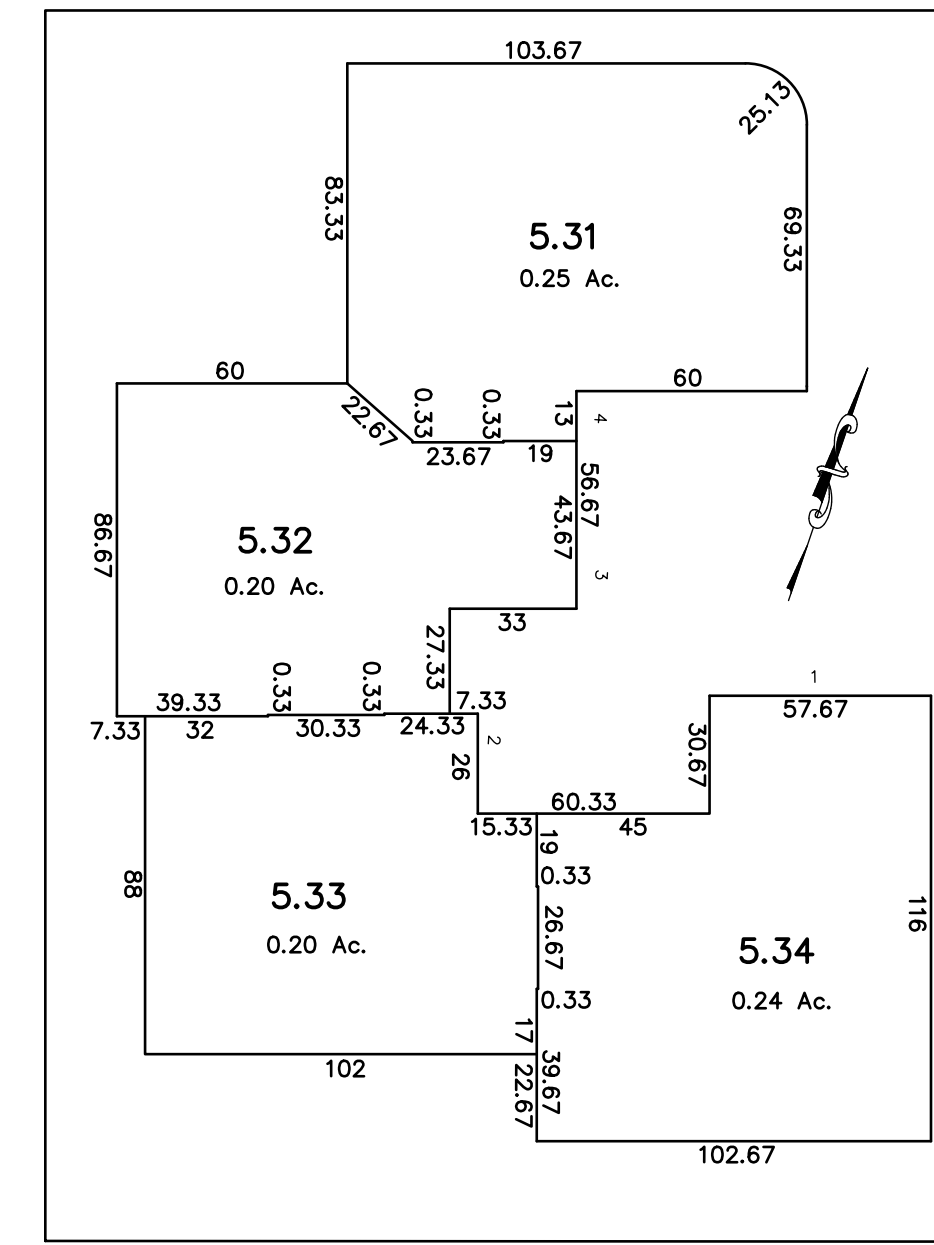
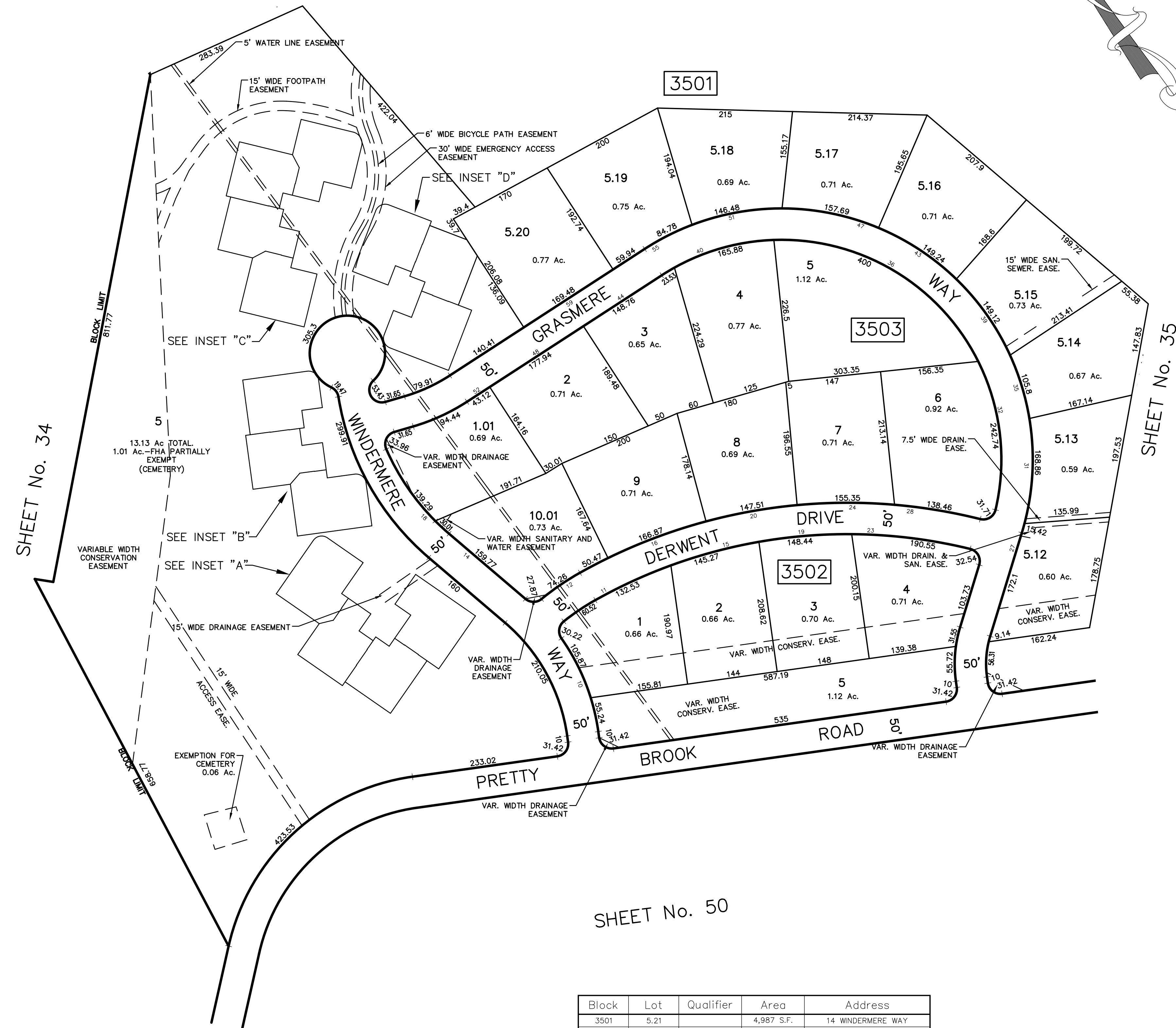
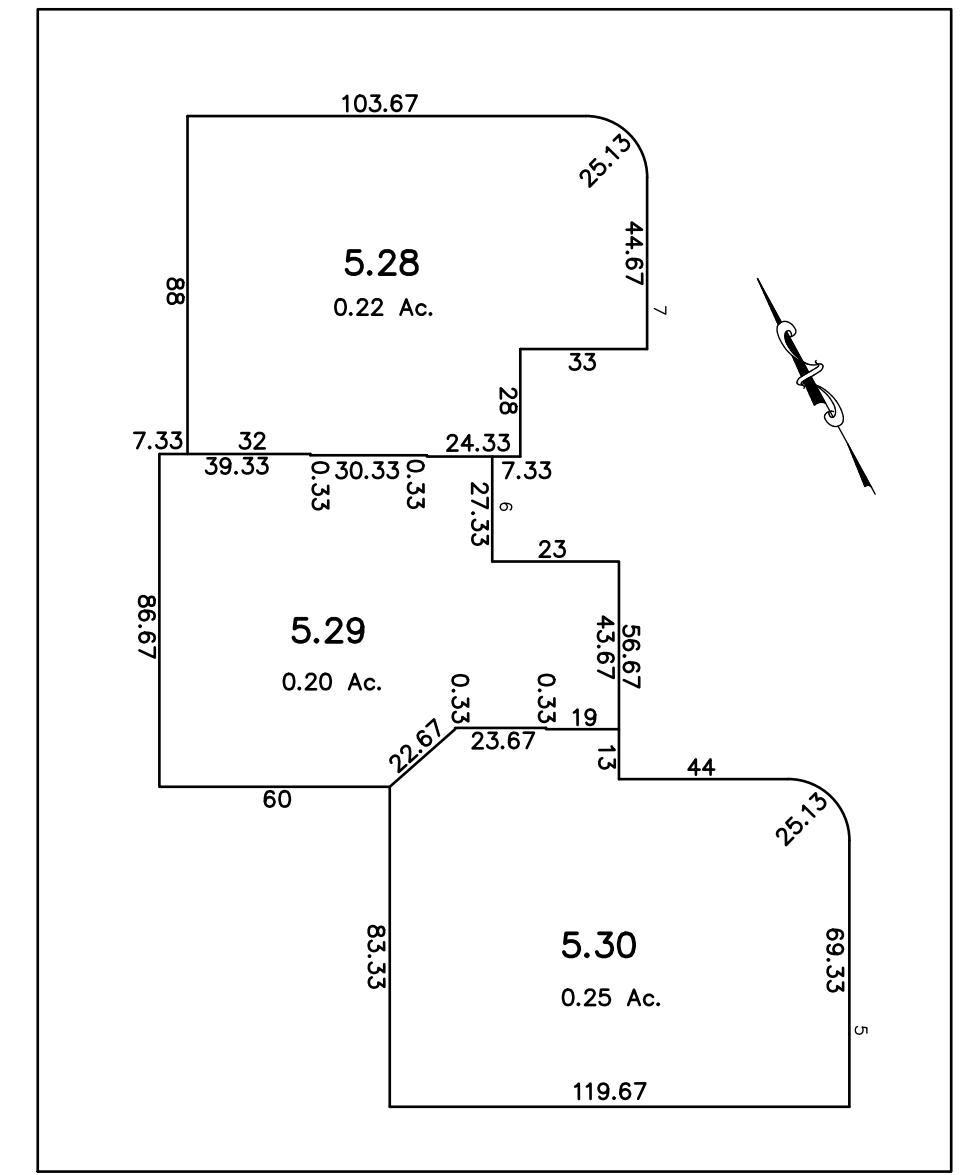


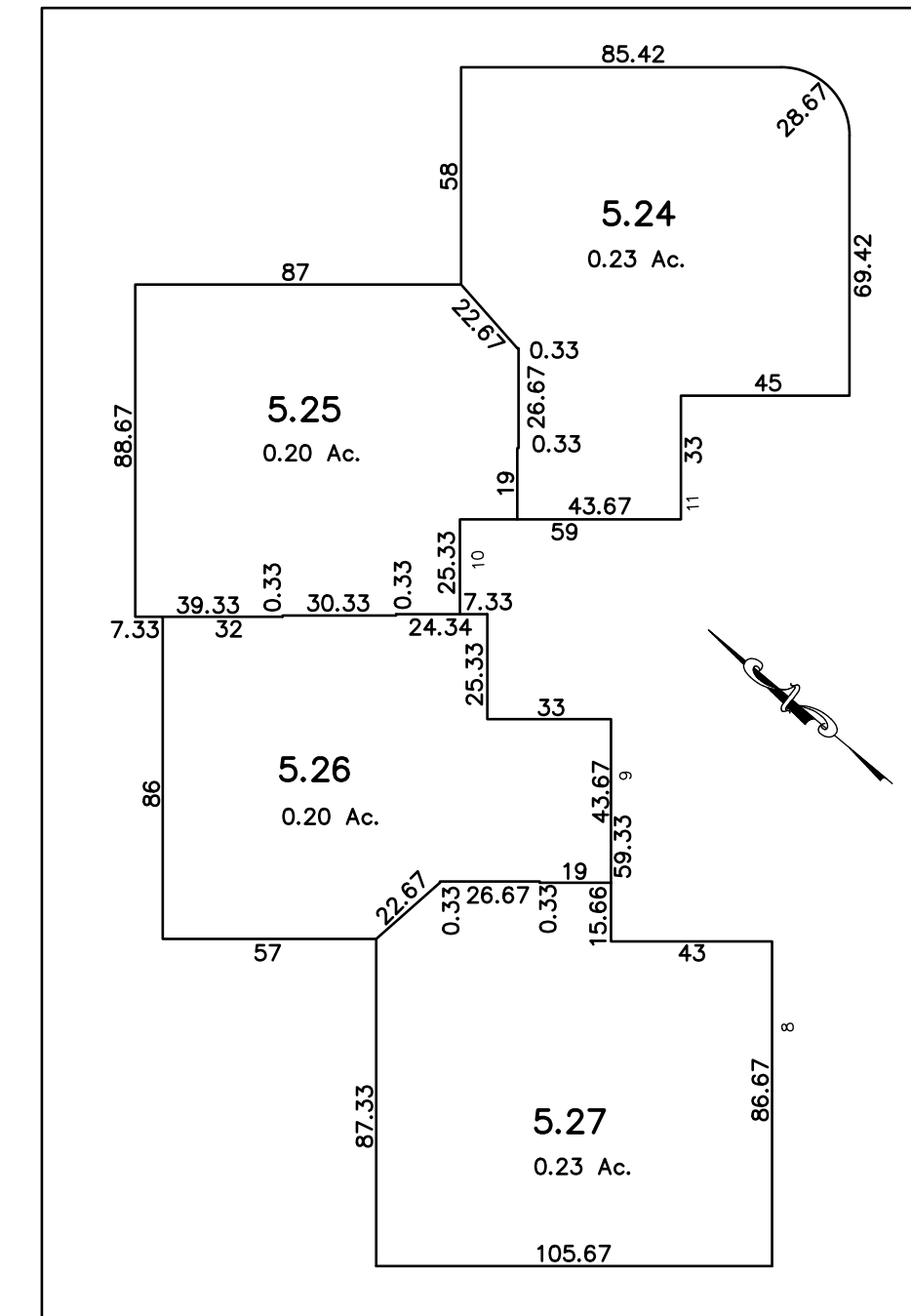
SHEET No. 35



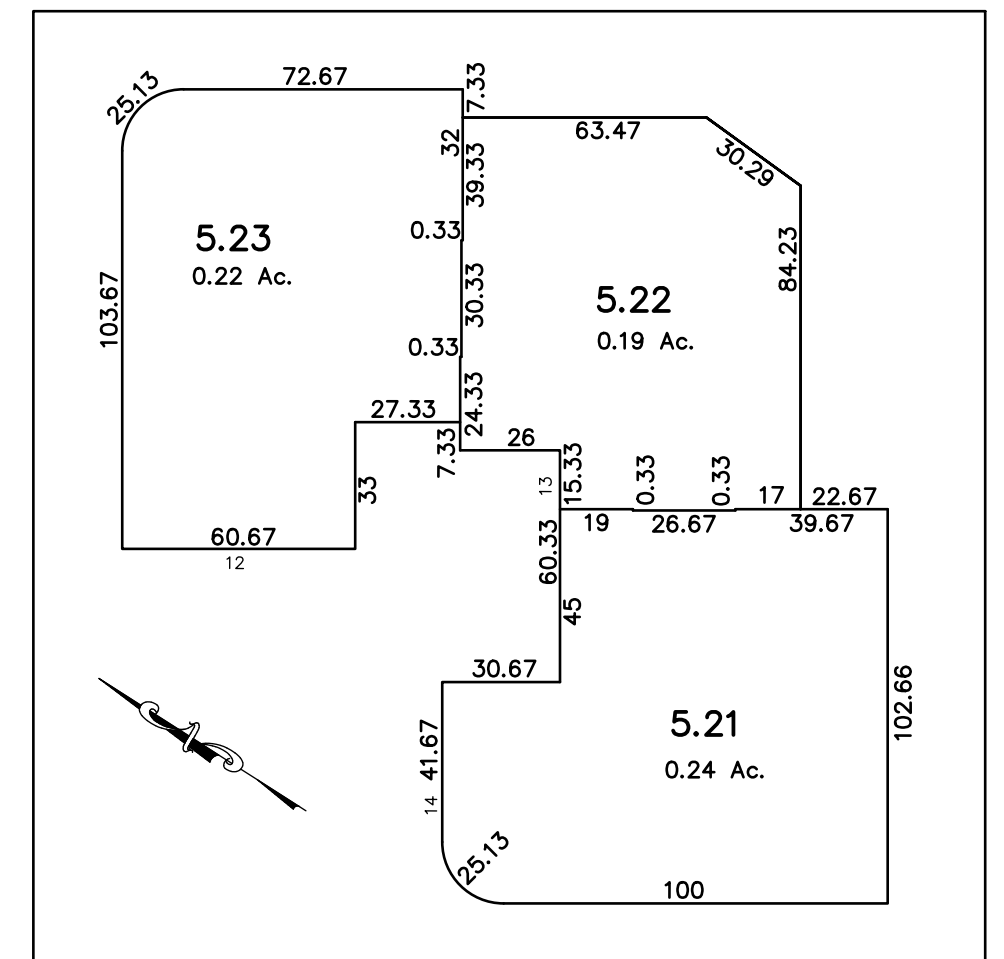
INSET "A"
SCALE: 1"=50'



INSET "B"
SCALE: 1"=50'



INSET "C"
SCALE: 1"=50'



INSET "D"
SCALE: 1"=50'

SHEET No. 50

Block	Lot	Qualifier	Area	Address
3501	5.21		4,987 S.F.	14 WINDERMERE WAY
3501	5.22		4,106 S.F.	13 WINDERMERE WAY
3501	5.23		4,359 S.F.	12 WINDERMERE WAY
3501	5.24		4,298 S.F.	11 WINDERMERE WAY
3501	5.25		4,106 S.F.	10 WINDERMERE WAY
3501	5.26		4,359 S.F.	9 WINDERMERE WAY
3501	5.27		4,298 S.F.	8 WINDERMERE WAY
3501	5.28		4,408 S.F.	7 WINDERMERE WAY
3501	5.29		4,804 S.F.	6 WINDERMERE WAY
3501	5.30		4,853 S.F.	5 WINDERMERE WAY
3501	5.31		4,881 S.F.	4 WINDERMERE WAY
3501	5.32		4,424 S.F.	3 WINDERMERE WAY
3501	5.33		4,083 S.F.	2 WINDERMERE WAY
3501	5.34		4,842 S.F.	1 WINDERMERE WAY

REVISIONS		
DATE	L.S. NAME	NO.
10/1/21	GREGORY SANDUSKY	GB36758

This map has been redrawn using Computer Aided Drafting/Design (CAD/D) based on the map prepared by Matthew L. Martini, December, 1994.

TAX MAP PRINCETON
 MERCER COUNTY, NEW JERSEY
 SCALE: 1" = 100' OCTOBER, 2012
 DAVID B. DIXON, PLS
 Professional Land Surveyor N.J. Lic. No.27282
 OMLAND ENGINEERING ASSOCIATES, INC.
 CEDAR KNOLLS, NEW JERSEY
 To Show Conditions as of October, 2012