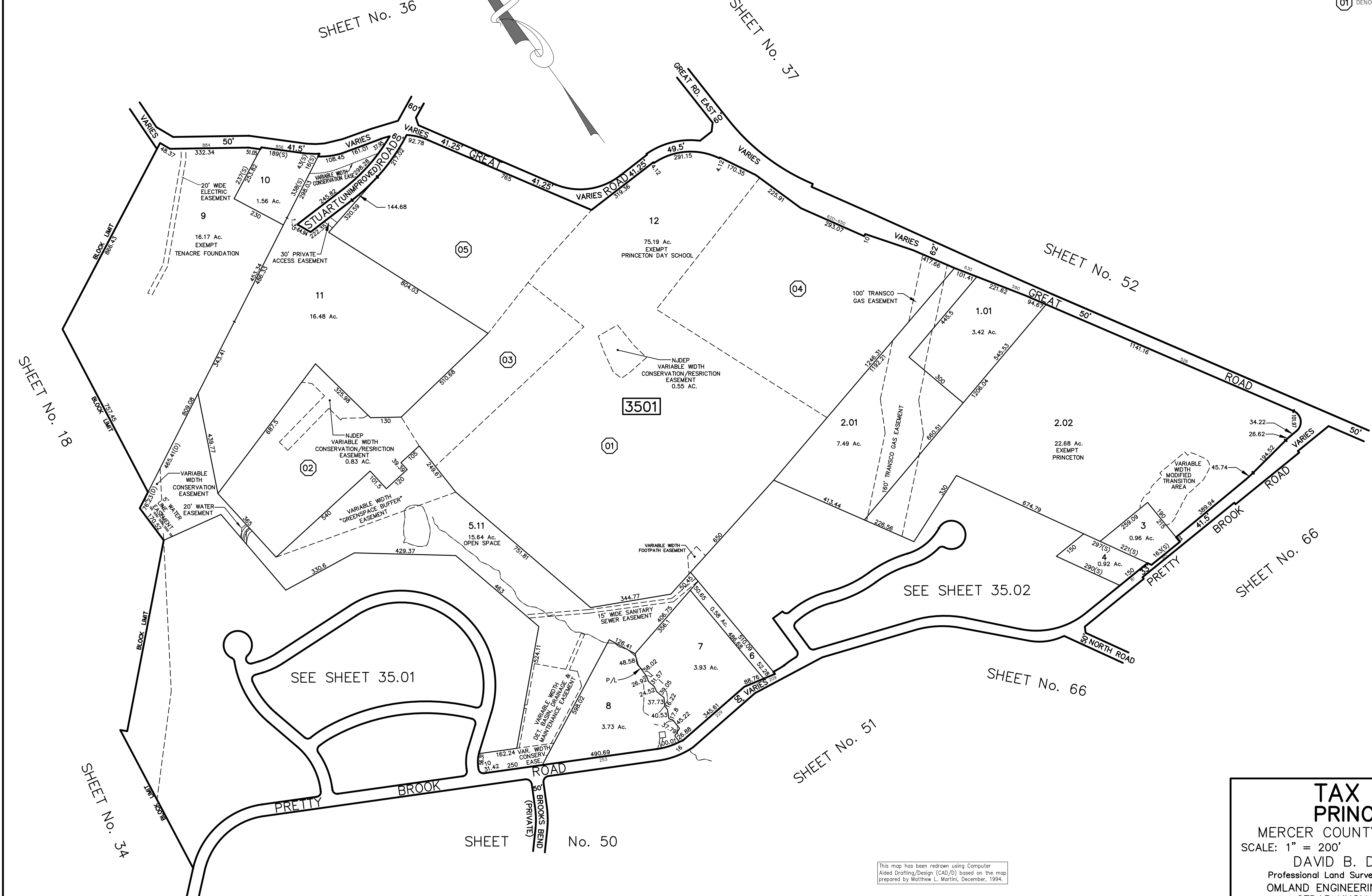


REVISIONS		
DATE	NAME	NO.
10/31/16	GREGORY SANDUSKY	GB36758
10/1/17	GREGORY SANDUSKY	GB36758
10/1/21	GREGORY SANDUSKY	GB36758

Princeton Qualifiers				
Princeton Day School				
BLOCK	LOT	Qualifier	Building Association	Acres
3501	12	C01	650 GREAT ROAD	36.45 Ac.
		C02	650 GREAT ROAD	7.47 Ac.
		C03	650 GREAT ROAD	4.99 Ac.
		C04	GREAT ROAD	14.82 Ac.
		C05	650 GREAT ROAD	11.05 Ac.

QUALIFIER LEGEND  
 (01) DENOTES QUALIFIER NUMBER



This map has been redrawn using Computer Aided Drafting/Design (CAD/D) based on the map prepared by Matthew L. Martini, December, 1994.

**TAX MAP PRINCETON**  
 MERCER COUNTY, NEW JERSEY  
 SCALE: 1" = 200'      OCTOBER, 2012  
 DAVID B. DIXON, PLS  
 Professional Land Surveyor N.J. Lic. No.27282  
 OMLAND ENGINEERING ASSOCIATES, INC.  
 CEDAR KNOLLS, NEW JERSEY  
 To Show Conditions as of October, 2012