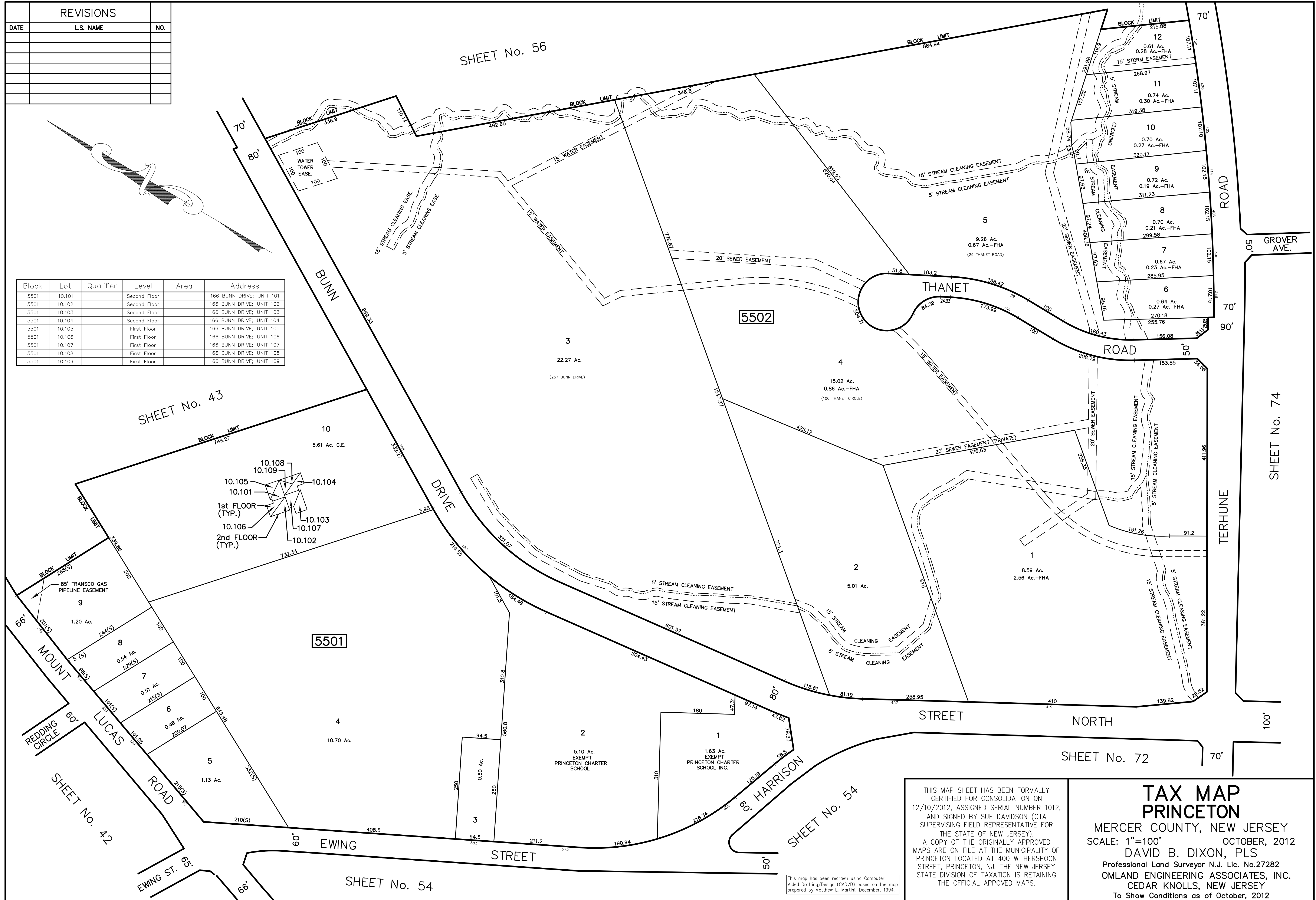


REVISIONS		
DATE	L.S. NAME	NO.

SHEET No. 56

Block	Lot	Qualifier	Level	Area	Address
5501	10.101		Second Floor		166 BUNN DRIVE; UNIT 101
5501	10.102		Second Floor		166 BUNN DRIVE; UNIT 102
5501	10.103		Second Floor		166 BUNN DRIVE; UNIT 103
5501	10.104		Second Floor		166 BUNN DRIVE; UNIT 104
5501	10.105		First Floor		166 BUNN DRIVE; UNIT 105
5501	10.106		First Floor		166 BUNN DRIVE; UNIT 106
5501	10.107		First Floor		166 BUNN DRIVE; UNIT 107
5501	10.108		First Floor		166 BUNN DRIVE; UNIT 108
5501	10.109		First Floor		166 BUNN DRIVE; UNIT 109



SHEET No. 43

5501

5502

SHEET No. 74

SHEET No. 72

SHEET No. 54

SHEET No. 54

THIS MAP SHEET HAS BEEN FORMALLY CERTIFIED FOR CONSOLIDATION ON 12/10/2012, ASSIGNED SERIAL NUMBER 1012, AND SIGNED BY SUE DAVIDSON (CTA SUPERVISING FIELD REPRESENTATIVE FOR THE STATE OF NEW JERSEY). A COPY OF THE ORIGINALLY APPROVED MAPS ARE ON FILE AT THE MUNICIPALITY OF PRINCETON LOCATED AT 400 WITHERSPOON STREET, PRINCETON, NJ. THE NEW JERSEY STATE DIVISION OF TAXATION IS RETAINING THE OFFICIAL APPROVED MAPS.

TAX MAP PRINCETON
 MERCER COUNTY, NEW JERSEY
 SCALE: 1"=100' OCTOBER, 2012
 DAVID B. DIXON, PLS
 Professional Land Surveyor N.J. Lic. No.27282
 OMLAND ENGINEERING ASSOCIATES, INC.
 CEDAR KNOLLS, NEW JERSEY
 To Show Conditions as of October, 2012

This map has been redrawn using Computer Aided Drafting/Design (CAD/D) based on the map prepared by Matthew L. Martini, December, 1994.