

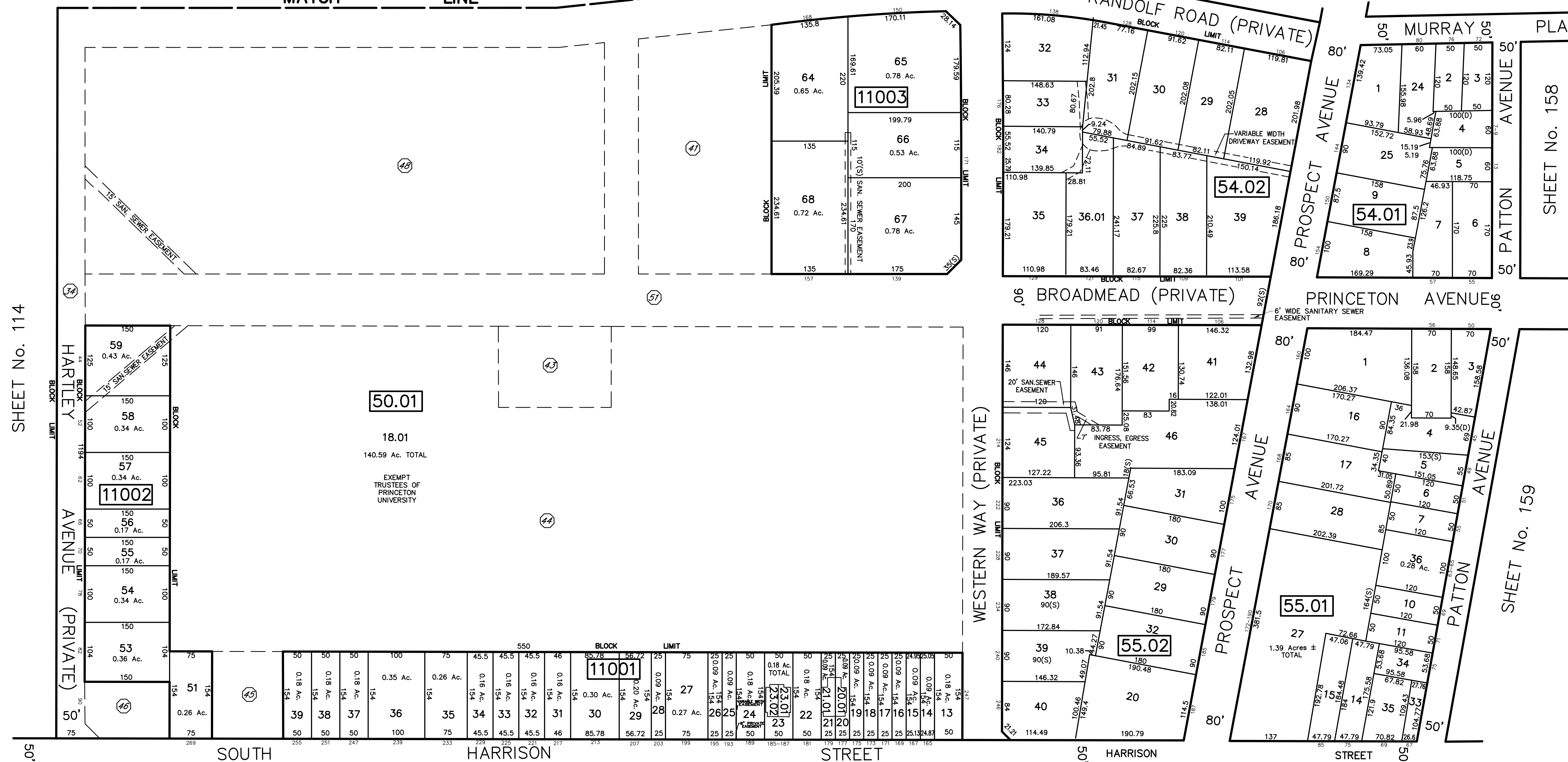
SHEET No. 116

MATCH LINE

SHEET No. 109

SHEET No. 157

SHEET No. 114



REVISIONS		
DATE	NAME	NO.
10/1/14	GREGORY SANDUSKY	0836706
10/3/16	GREGORY SANDUSKY	0836706
10/1/17	GREGORY SANDUSKY	0836706
10/1/18	GREGORY SANDUSKY	0836706
10/1/19	GREGORY SANDUSKY	0836706
10/1/20	GREGORY SANDUSKY	0836706

Princeton Qualifiers				
Trustees of Princeton University				
BLOCK	LOT	Qualifier	Building Association	Acreage
50.01	18.01	D44	HARTLEY + FITZ ROAD	2.20 Ac.
		D41	171 BROADMEAD	2.31 Ac.
		D43	BROADMEAD POOL	0.65 Ac.
		D44	BROADMEAD	17.83 Ac.
		D45	263 S. HARRISON ST.	0.44 Ac.
		D46	90 HARTLEY AVE.	0.34 Ac.
		D48	BROADMEAD DRAINAGE BASIN	6.15 Ac.
		D49	CHILDCARE CONSTRUCTION	2.28 Ac.
		D50	CHILDCARE LOT CONSTRUCTION	0.57 Ac.
		D51	BROADMEAD + FITZ RD.	3.27 Ac.

Block	Lot	Qualifier	Area	Address
11001	20.01	C01	1,816 S.F.	177 SOUTH HARRISON STREET
11001	21.01	C01	1,816 S.F.	179 SOUTH HARRISON STREET
11001	23.01		1,600 S.F.	185 SOUTH HARRISON STREET
11001	23.02		1,600 S.F.	187 SOUTH HARRISON STREET

QUALIFIER LEGEND
 DENOTES QUALIFIER NUMBER

This map has been redrawn using Computer Aided Drafting/Design (CAD/D) based on the map prepared by Matthew L. Martini, December, 1994.

THIS MAP SHEET HAS BEEN FORMALLY CERTIFIED FOR CONSOLIDATION ON 12/10/2012, ASSIGNED SERIAL NUMBER 1012, AND SIGNED BY SUE DAVIDSON (CTA SUPERVISING FIELD REPRESENTATIVE FOR THE STATE OF NEW JERSEY). A COPY OF THE ORIGINALLY APPROVED MAPS ARE ON FILE AT THE MUNICIPALITY OF PRINCETON LOCATED AT 400 WITHERSPOON STREET, PRINCETON, N.J. THE NEW JERSEY STATE DIVISION OF TAXATION IS RETAINING THE OFFICIAL APPROVED MAPS.

TAX MAP PRINCETON
 MERCER COUNTY, NEW JERSEY
 SCALE: 1" = 100' OCTOBER, 2012
 DAVID B. DIXON, PLS
 Professional Land Surveyor N.J. Lic. No.27282
 OMLAND ENGINEERING ASSOCIATES, INC.
 CEDAR KNOLLS, NEW JERSEY
 To Show Conditions as of October, 2012